



# GARDENING

2023  
COLLECTION

STARMATRIX GROUP INC.  
www.starmatrix.cn

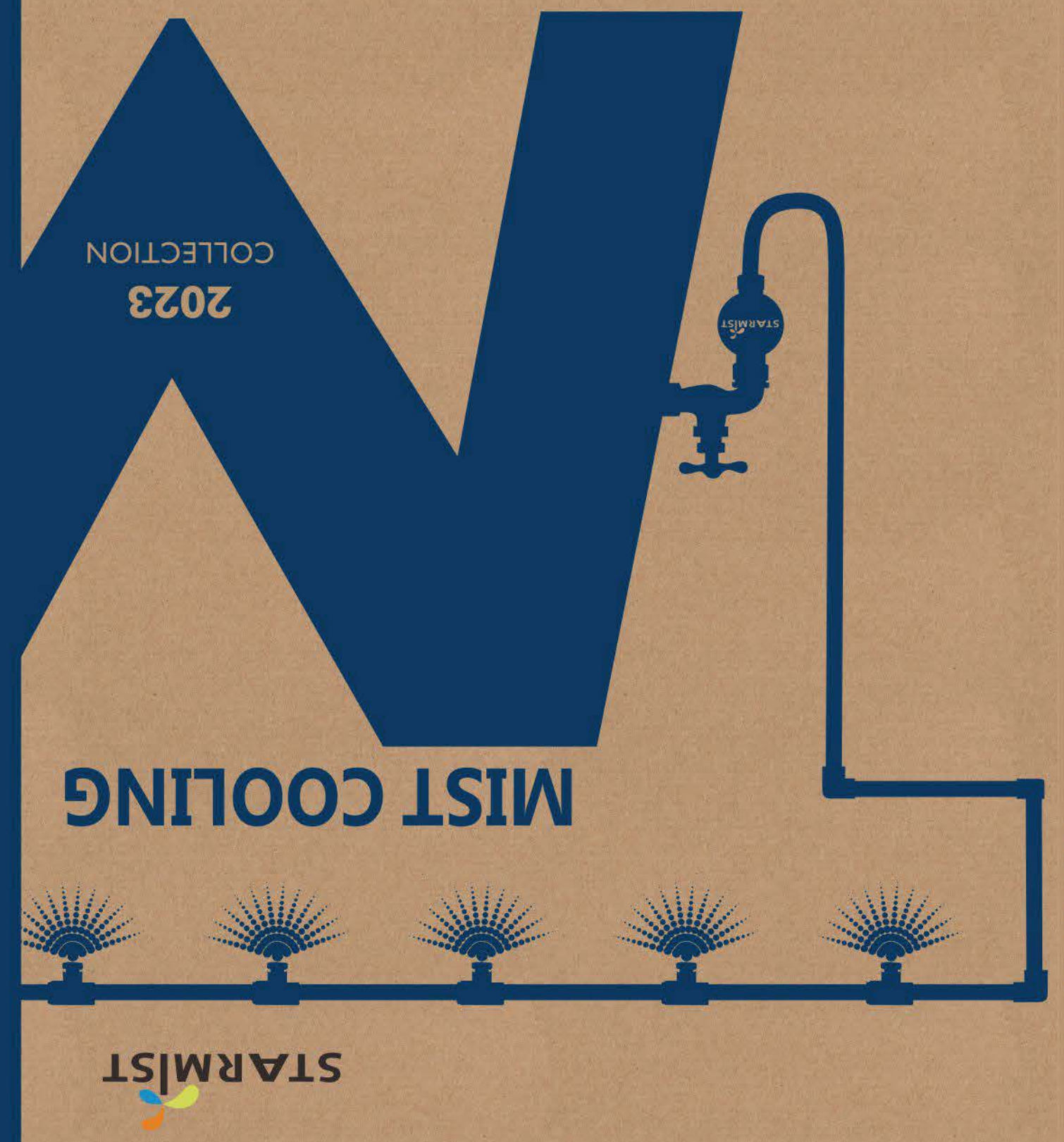
STARMATRIX GROUP INC.

CATALOGUE 2023



**HEAD OFFICE**  
Starmatrix Group Inc.  
253 Mengxi Road, Zhenjiang,  
Jiangsu, China 212000  
Tel: +86 511 8598 2598  
Fax: +86 511 8598 5598

**FACTORY**  
Starmatrix Industries,  
No.1, Xinwanbao Road, Phoenix Industrial Park,  
Yanling, Danyang, Jiangsu, China 212300  
Tel: +86 511 8803 2622 Email: star@starmatrix.cn  
Fax: +86 511 8803 8115 www.starmatrix.cn



MIST COOLING

2023  
COLLECTION







## COMPANY PROFILE

STARMATRIX GROUP INC. is an exporting-oriented group company established in 1992 which combined with production, trading and services. Our head office is located in Zhenjiang, about 200 kilometers north of Shanghai, which is the most economically active part in China.

Nowadays STARMATRIX GROUP INC. has become one of the leading manufactures of garden equipment professional engaged in research, development, sale and service of hose reel, garden tools, pond filter and mist cooling systems.

We have established a stable supply and marketing network of numerous products in the international market. Our products have been sold to more than 30 countries in Europe, America, Australia and Asia. Based on the existing products, we can also produce according to the samples and drawings provided by customers, and cooperate with customers in various ways (such as OEM).

We are committed to strict quality control and considerate customer service. Our experienced staff are ready to discuss your requirements and ensure full customer satisfaction.

Under the close cooperation with European and American designers, our products have unique appearance and advanced technology. We always provide the latest designed products, and our products have the widest range of application.

We are fully equipped with plastic injection, extrusion, blow moulding and metal processing machines. Also we have 6 assembly lines and more than 300 qualified engineers and workers.

We are confident in our cooperation. We warmly welcome customers from home and abroad to cooperate and create a better future.



[www.starmatrix.cn](http://www.starmatrix.cn)



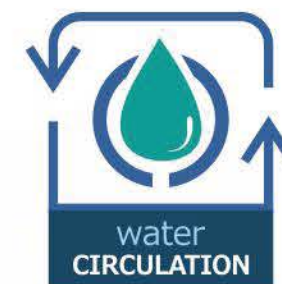
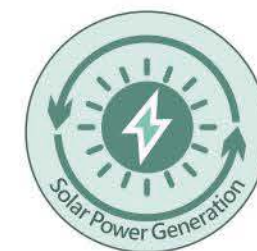




## ENERGY SAVING, WATER SAVING, RECYCLING

Starmatrix is a professional manufacturer of highly engineered Garden, Pond and Pool products. Being green is always the concept and mission of the company.

In devoting to creating a green and leisure home yard life and developing products designed to enable energy-efficient operation under energy saving facilities, Starmatrix makes a positive impact on the world not only because of the types of products we make, but also how we make them. Starmatrix relies on solar electric technology, cuts the amount of energy needed in production, recycles water waste each day through a closed-loop recycling process, continuously updates the product ranges for the purpose of water saving and utmostly keeps materials of product and packaging environmental and recyclable.



### ■ ENERGY SAVING

The forward-looking solar power generation system provides 60% energy for the factory every year.



### ■ WATER SAVING

Efficient water circulation system does not waste every drop of water in production activities.



### ■ RECYCLING

All of our products and cartons consist at least 65 % recycled material.







# GARDENING





# PRODUCT INDEX



01/22

HOSE REEL

- 03/13 Automatic Retractable Water Hose Reel
- 14 Manual Handy Reel
- 15/16 Groud Spike
- 17/20 Metal Hose Reel
- 21/22 Automatic Retractable Air Hose Reel



23/26

GARDEN HOSE

- 25/26 Garden Hose



27/32

GARDEN CONNECTORS

- 29/32 Garden Connectors



33/38

GARDEN TOOLS

- 35/38 Garden Tools



39/42

GARDEN SPRAYER

- 41/42 Pressure Sprayer
- Electric Sprayer



43/48

POND MAINTENANCE

- 45/46 Pone Filter
- 47/48 Pond Cleaner





# 01

## Retractable Hose Reel

To create a better life, start from here...

Turn on the water and pull out the hose, Gartenkraft retractable hose reel with high quality hose will bring you happy watering time to water hard-to-reach plants, drive the sprinkler, clean the car...what a wonderful watering experience for everyone.

Gartenkraft retractable hose reel is a wall mounted unit featuring a high quality spring loaded hose that automatically retracts on your command. Its specially designed locking mechanism secures the hose at any length, eliminating excess hose prevent kinks and tangles

To put you hose away, simply give it a gentle tug and automatic rewind feature and self-layering mechanism retracts and coils your hose saving your time and energy.

Thanks to the cleverly designed mounting brackets, the hose reel pivots 180° and follows your direction around the garden as you water. After watering, the reel can be stored flat against the wall keeping your garden neat and tidy.





01

## AUTOMATIC RETRACTABLE WATER HOSE REEL

★ NEW for 2023 ★

GARTENKRAFT

Hose Reel

CERTIFICATES COMPLY WITH



### OPTIONAL ACCESSORIES



Ground Base With Extension Ring



Ground Spike

## Model: Reel King RK-20S/40S 1/2" RK-15B/30B 5/8"

### FUNCTION & FEATURES:

- Ideal for watering, irrigation, cleaning in lawn, garden, courtyard, patio, deck, driveway
- Environmental and eco-friendly
- Distinguished design and new presentation
- Free locking mechanism realizes to stop and lock hose at any desired length
- Slow rewinding system to retract hose at a safe speed
- Automatic layering mechanism to guide hose to retract without kink and tangles
- Mounting system allows the rotation of hose reel around reinforced nylon wall bracket about 180 degrees
- Multi-scenario use to achieve the rotation of 360 degrees by optional ground base or ground spike
- Hose reel allows to be padlocked to the wall bracket for anti-theft
- Dual integrated carry handles make it easy to lift hose reel from its mounting bracket to move it wherever you need
- Super large side round cover for customized logo printing
- Comes fully equipped and pre-fitted, includes hose, hose end quick connection fittings and hardware



Item Number	RK-15B	RK-20S	RK-30B	RK-40S
Watering Hose/Leader Hose	15m/50ft+1.5m/5.0ft	20m/65ft+1.5m/5ft	30m/100ft+2.0m/6.5ft	40m/130ft+2.0m/6.5ft
Casing Material	PP	PP	PP	PP
Hose Material	PVC	PVC	PVC	PVC
Hose Diameter	5/8"	1/2"	5/8"	1/2"
Working Pressure	3bar-8bar			
Burst Pressure	24bar			
Fitting	3/4"	3/4"	3/4"	3/4"
Product Size (mm)	505x270x415	505x270x415	595x305x470	595x305x470
G.W/N.W(kg)	10.8/9.8	11.4/10.4	15.8/14.8	16.15/15.15
Outer Carton Size (mm)	525x290x435	525x290x435	615x325x490	615x325x490
Qty/Ctn	1	1	1	1
Qty 20GP/40GP/40HQ	440/900/1080	440/900/1080	300/620/680	300/620/680
EAN	6949031909392	6949031909408	6949031909415	9649031909422



**Model: Reel Propepler**  
**SW-20S/40S 1/2" SW-15B/30B 5/8"**

### FUNCTION & FEATURES:

- Ideal for watering, irrigation, cleaning in lawn, garden, courtyard, patio, deck, driveway
- Environmental and eco-friendly
- Distinguished design and new presentation
- Free locking mechanism realizes to stop and lock hose at any desired length
- Slow rewinding system to retract hose at a safe speed
- Automatic layering mechanism to guide hose to retract without kink and tangles
- Mounting system allows the rotation of hose reel around reinforced nylon wall bracket: about 180 degrees
- Hose reel allows to be padlocked to the wall bracket for anti-theft
- Extra large carry handle makes it easy to lift hose reel to move it wherever you need
- Comes fully equipped and pre-fitted, includes hose, hose end quick connection fittings and hardware



Item Number	SW-15B	SW-20S	SW-30B	SW-40S
Watering Hose/Leader Hose	15m/50ft+1.5m/5.0ft	20m/65ft+1.5m/5.0ft	30m/100ft+2.0m/6.5ft	40m/130ft+2.0m/6.5ft
Casing Material	PP	PP	PP	PP
Hose Material	PVC	PVC	PVC	PVC
Hose Diameter	5/8"	1/2"	5/8"	1/2"
Working Pressure	3bar-8bar			
Burst Pressure	24bar			
Fitting	3/4"	3/4"	3/4"	3/4"
Product Size (mm)	510x280x420	510x280x420	570x315x470	570x315x470
G.W/N.W(kg)	9.7/8.4	11.5/10.5	17.8/16.8	18.5/17.5
Outer Carton Size (mm)	530x300x440	530x300x440	590x335x490	590x335x490
Qty/Ctn	1	1	1	1
Qty 20GP/40GP/40HQ	425/875/1050	425/875/1050	300/610/700	300/610/700
EAN	6949031909606	6949031909439	6949031909446	6949031909453



Automatic Retractable  
Water Hose Reel



CERTIFICATES



COMPLY WITH



Model: Reel Xcellent  
XW-20S/30S/40S 1/2"  
XW-15B/20B/25B/30B 5/8"  
**High Flow**

FUNCTION & FEATURES:

- Ideal for watering, irrigation, cleaning in lawn, garden, courtyard, patio, deck, driveway
- Environmental and eco-friendly
- Removable leader hose allows to get it replaced when need
- Access panel on the reel top makes it possible and convenient to change diverse hose
- Unique safe drum locking device to keep drum motionless without hurt to users when replace hose
- Free locking mechanism to stop and lock hose at any desired length
- Slow rewinding system to retract hose at a safe speed
- Automatic layering mechanism to guide hose to retract without kink and tangles
- Mounting system allows the rotation of hose reel around metal bracket about 180 degrees
- Dual integrated carry handles make it easy to lift hose reel from its mounting bracket to move it wherever you need
- Comes fully equipped and pre-fitted, includes hose, hose end quick connection fittings and hardware

Item Number	XW-15B	XW-20B	XW-25B	XW-30B	XW-20S	XW-30S	XW-40S
Watering Hose/Leader Hose	15m/50ft+1.5m/5.0ft	20m/65ft+1.5m/5.0ft	25m/82ft+2.0m/6.5ft	30m/100ft+2.0m/6.5ft	20m/65ft+1.5m/5.0ft	30m/100ft+2.0m/6.5ft	40m/130ft+2.0m/6.5ft
Hose Material	PVC	PVC	PVC	PVC	PVC	PVC	PVC
Hose Diameter	5/8"	5/8"	5/8"	5/8"	1/2"	1/2"	1/2"
Working Pressure	3bar-8bar				3bar-8bar		
Burst Pressure	24bar				24bar		
Fitting	3/4"	3/4"	3/4"	3/4"	3/4"	3/4"	3/4"
Product Size (mm)	480*255*400	525*280*450	525*280*450	525*290*450	480*255*400	525*280*450	525*290*450
G.W/N.W(kg)	11.8/10.5	14.8/13.2	15.5/14.4	17.8/15.7	10.8/9.5	14.1/13	19.1/17
Outer Carton Size (mm)	500*275*420	545*300*470	545*300*470	545*310*470	500*275*420	545*300*470	545*310*470
Qty/Ctn	1	1	1	1	1	1	1
Qty 20GP/40GP/40HQ	480/1004/1176	420/880/1032	420/880/1032	355/736/863	480/1004/1176	420/880/1032	355/736/863
EAN	6949031904182	6949031904205	6949031909477	6949031904229	6949031904175	6949031904199	6949031904212



Hose Access Panel Makes It Easy To Replace Hose



Drum Locking To Help A Safe Hose Replacement



01

AUTOMATIC RETRACTABLE  
WATER HOSE REEL

Model: Reel Flyer

NW-10S/15S/20S/30S 1/2"

NW-20B 5/8" **High Flow**

FUNCTION & FEATURES:

- Ideal for watering, irrigation, cleaning in lawn,garden, courtyard, patio,deck,driveway
- Environmental and eco-friendly
- Delicate and exquisite, full-featured
- Free locking mechanism realizes to stop and lock hose at any desired length
- Slow rewinding system to retract hose at a safe speed
- Automatic layering mechanism to guide hose to retract without kink and tangles
- Mounting system allows the rotation of hose reel around wall bracket about 180 degrees
- Multi-scenario use to achieve the rotation of 360 degrees by optional ground base or ground spike
- Hose reel allows to be padlocked to the wall bracket for anti-theft
- Comes fully equipped and pre-fitted,includes hose, hose end quick connection fittings and hardwares



Metal Bracket for NW-10S

OPTIONAL ACCESSORIES



Ground Spike



Ground Base With  
Extension Ring

CERTIFICATES



COMPLY WITH



GARTENKRAFT

Hose Reel

Item Number	NW-10S	NW-15S	NW-20S	NW-25S	NW-30S	NW-20B
Watering Hose/Leader Hose	10m/33ft+1.5m/5.0ft	15m/50ft+1.5m/5.0ft	20m/65ft+1.5m/5.0ft	25m/82ft+2.0m/6.5ft	30m/100ft+2.0m/6.5ft	20m/65ft+1.5m/5.0ft
Hose Material	PVC	PVC	PVC	PVC	PVC	PVC
Hose Diameter	1/2"	1/2"	1/2"	1/2"	1/2"	5/8"
Working Pressure	3bar-8bar					
Burst Pressure	24bar					
Fitting	3/4"	3/4"	3/4"	3/4"	3/4"	3/4"
Product Size (mm)	375*190*330	440*190*365	460*215*408	490*250*435	490*250*435	490*250*435
G.W/N.W(kg)	5.5/4.4	7.9/6.5	8.5/7.7	11.0/10.0	13/11.7	13/11.7
Outer Carton Size (mm)	395x210x350	460*210*385	480x235x428	510x270x455	510x270x455	510x270x455
Qty/Ctn	1	1	1	1	1	1
Qty 20GP/40GP/40HQ	1084/2244/2630	810/1650/1925	664/1464/1729	600/1250/1350	600/1250/1350	600/1250/1350
EAN	6949031904038	6949031904045	6949031904052	6949031904069	6949031904076	6949031904106



Anti Theft Function



Automatic Retractable  
Water Hose Reel



Item Number	GKW-10S	GKW-15S	GKW-20S	GKW-25S	GKW-30S	GKW-20B
Watering Hose/Leader Hose	10m/33ft+1.5m/5.0ft	15m/50ft+1.5m/5.0ft	20m/65ft+1.5m/5.0ft	25m/82ft+2.0m/6.5ft	30m/100ft+2.0m/6.5ft	20m/65ft+1.5m/5.0ft
Hose Material	PVC	PVC	PVC	PVC	PVC	PVC
Hose Diameter	1/2"	1/2"	1/2"	1/2"	1/2"	5/8"
Working Pressure	3bar-8bar					
Burst Pressure	24bar					
Fitting	3/4"	3/4"	3/4"	3/4"	3/4"	3/4"
Product Size (mm)	400x200x330	440x240x350	440x240x350	583x368x260	583x368x260	583x368x260
G.W./N.W(kg)	6.3/5.9	7.9/7.1	9.5/8.6	14.4/12.2	14.4/12.6	15/13.5
Outer Carton Size (mm)	425x215x355	465x265x385	465x265x385	580x310x465	580x310x465	580x310x465
Qty/Ctn	1	1	1	1	1	1
Qty 20GP/40GP/40HQ	858/1728/1890	648/1350/1500	629/1308/1450	349/700/795	349/700/795	349/700/795
EAN	6949031904243	6949031904250	6949031904274	6949031904922	6949031904298	6949031904939

CERTIFICATES



COMPLY WITH



Model: Reel Royal  
GKW-10S/15S/20S/25S/30S 1/2"  
GKW-20B 5/8" **High Flow**

FUNCTION & FEATURES:

- Ideal for watering, irrigation, cleaning in lawn,garden, courtyard, patio,deck,driveway
- Environmental and eco-friendly
- Streamlined, classic and impact style
- Free locking mechanism realizes to stop and lock hose at any desired length
- Slow rewinding system to retract hose at a safe speed
- Automatic layering mechanism to guide hose to retract without kink and tangles
- Mounting system allows the rotation of hose reel around reinforced nylon wall bracket about 180 degrees
- Multi-scenario use to achieve the rotation of 360 degrees by optional ground base or ground spike
- Hose reel allows to be padlocked to the wall bracket for anti-theft
- Mobility with no handle
- Comes fully equipped and pre-fitted,includes hose, hose end quick connection fittings and hardwares



OPTIONAL ACCESSORIES



Ground Spike



Ground Base With Extension Ring



01

AUTOMATIC RETRACTABLE  
WATER HOSE REEL

CERTIFICATES



COMPLY WITH



Model: Reel Drum  
DW-10S/20S/30S 1/2"

FUNCTION & FEATURES:

- Ideal for watering, irrigation, cleaning in lawn,garden, courtyard, patio,deck,driveway
- Environmental and eco-friendly
- Concise, cost-efficient
- Free locking mechanism realizes to stop and lock hose at any desired length
- Slow rewinding system to retract hose at a safe speed
- Automatic layering mechanism to guide hose to retract without kink and tangles
- Mounting system allows the rotation of hose reel around metal bracket about 180 degrees
- Integrated carry handle makes it easy to lift hose reel from its mounting bracket to move it wherever you need
- Comes fully equipped and pre-fitted,includes hose, hose end quick connection fittings and hardwares



Item Number	DW-10S	DW-20S	DW-30S
Watering Hose/Leader Hose	10m/33ft+1.5m/5.0ft	20m/65ft+1.5m/5.0ft	30m/100ft+2.0m/6.5ft
Hose Material	PVC	PVC	PVC
Hose Diameter	1/2"	1/2"	1/2"
Working Pressure	3bar-8bar		
Burst Pressure	24bar		
Fitting	3/4"	3/4"	3/4"
Product Size (mm)	315x170x305	430x230x405	475x255x425
G.W/N.W(kg)	5.6/4.8	7.2/6.5	12.5/11.0
Outer Carton Size (mm)	335x190x325	515x388x223	562x424x253
Qty/Ctn	1	1	1
Qty 20GP/40GP/40HQ	1084/2244/2630	750/1530/1680	478/990/1164
EAN	6949031915164	6949031904373	6949031904304

01

MANUAL HANDY REEL



Hose Reel

Model: Reel Founder  
JW-20 5/16" JW-15 3/8"

FUNCTION & FEATURES:

- Revolutionary Innovation of dual-wheel system to achieve dual-directional hose pulling out and rewinding
- Equal length hose storage in both wheels inside of reel to avoid embarrassment of shorter leader hose not to reach garden faucet
- Retractable, portable, hand held
- Lightweight, easy to install
- Easily attaches to any standard existing water supply
- Arched handle, more convenient to carry
- Manual rewind
- Leader hose included



COMPLY WITH



Model: Reel Box  
FW-20 5/16" FW-15 3/8"

FUNCTION & FEATURES:

- Revolutionary Innovation of dual-wheel system to achieve dual-directional hose pulling out and rewinding
- Equal length hose storage in both wheels inside of reel to avoid embarrassment of shorter leader hose not to reach garden faucet
- Retractable, portable, hand held
- Lightweight, easy to install
- Easily attaches to any standard existing water supply
  - Handles on the both top angles, easy to move
- Manual rewind
- Leader hose included



COMPLY WITH



Item Number	JW-15	JW-20	FW-15	FW-20
Watering Hose/Leader Hose	7.5m/25ft+7.5m/25ft	10m/33ft+10m/33ft	7.5m/25ft+7.5m/25ft	10m/33ft+10m/33ft
Hose Material	PVC	PVC	PVC	PVC
Hose Diameter	3/8"	5/16"	3/8"	5/16"
Working Pressure	3bar-8bar			
Burst Pressure	24bar			
Product Size (mm)	320x150x350	320x150x350	355x150x335	355x150x335
G.W/N.W(kg)	4/3.5	4.5/4.0	4/3.5	4.5/4
Outer Carton Size (mm)	360x165x400	360x165x400	385x165x380	385x165x380
Qty/Ctn	1	1	1	1
Qty 20GP/40GP/40HQ	1288/2588/2946	1288/2588/2946	1288/2588/2946	1288/2588/2946
EAN	6949031909781	6949031909798	6949031909804	6949031909811



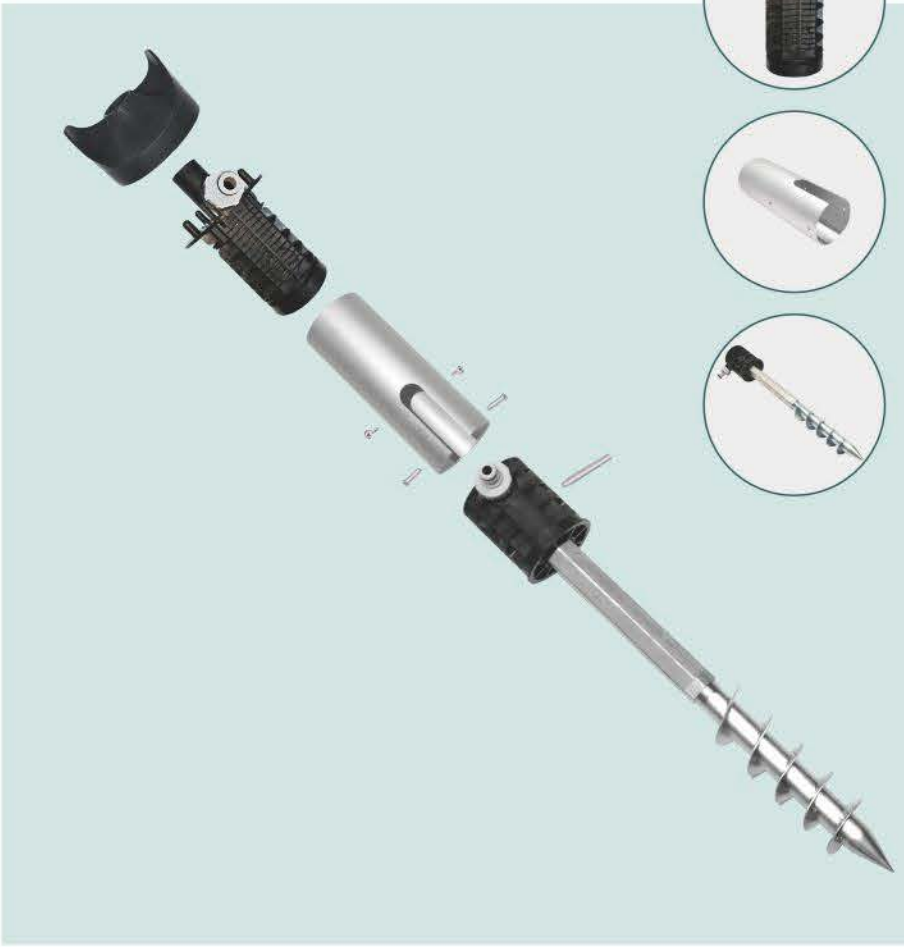
Ground Spike For Hose Reel



GROUND SPIKE

- Complete Package including assembly tools
- Easy to assemble and labor-saving to install
- Equipped with inlet/outlet connectors to achieve quick connections with garden hose
- Sturdy metal spike means you can install it anywhere of your lawn garden without damaging your wall to mount hose reel
- Allows hose reel to 360 degree rotate. You can easily water your garden in any direction and have maximum freedom of movement
- Free movement mechanism to prevent leader hose from kink or tangling or wrapping spike
- Applicable to ready-made hose reels with metal pin support onto bracket in the open market
- User-friendly design of Anti-theft function

Item Number	HRA-1001
Material	PP+Galvanized Iron
G.W/N.W(kg)	2/2.4kg
Outer Carton Size (mm)	165*165*310mm
Qty/Ctn	1
EAN	6949031909613





Metal Hose Reel



Item Number	MHC-125
Leader Hose	1.5m/5.0ft 5/8"
Hose Load Capacity	38m/125ft 5/8"
Working Pressure	3bar-8bar
Burst Pressure	24bar
G.W/N.W(kg)	11.0/10.0
Outer Carton Size (mm)	510*410*460mm
Qty/Ctn	1
Qty 20GP/40GP/40HQ	326/670/720
EAN	6949031909842

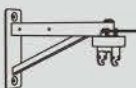
Model: Reel Turbo  
METAL HOSE REEL  
Strong and sturdy hose guide

FUNCTION & FEATURES:

- Up-to-date design, durable
- Heavy Duty Steel construction
- 1.5m/5ft 5/8" high flow leader hose included
- Hold up 38m/125ft 5/8" high flow garden hose (Hose not included)
- Rust-proof brass/aluminum connections with Leak-Free Guarantee
- Corrosion-resistant powder coat finish
- Automatic layering mechanism to guide hose to retract without kink and tangles
- Full 360 degree reel rotation for effortless rewinding
- Patented Locking mechanism makes reel steady when manually retract hose
- Storage tray for storing your frequently used tools and nozzles
- Mounting Bracket and hardware included
- Non-slip crank handle
- Minimal assembly



PARTS LIST



Swing Arm



Basket



Crank Handle



Hose Guide



Leader Hose



Hose Reel

HARDWARE INCLUDED



Long Allen Bolts



Middle Bolt



Allen Screw



External Hexagon  
Self Tapping Screw  
With Washers



Lock Nuts



Anchor



Holds 38m/125 feet hose  
(hose not included)



Hose guide



Bronze powder coating  
to protect the reel



New type of locking mechanism



360°Rotation





Metal Hose Cart

Item Number	MHW-125F
Leader Hose	1.5m/5.0ft 5/8"
Hose Load Capacity	38m/125ft 5/8"
Working Pressure	3bar-8bar
Burst Pressure	24bar
G.W/N.W(kg)	21.7/20.7
Outer Carton Size (mm)	490*450*580mm
Qty/Ctn	1
Qty 20GP/40GP/40HQ	254/512/570
EAN	6949031909859

Model: Reel Wagon  
METAL HOSE CART

FUNCTION & FEATURES:

- 2-Wheels metal hose cart provides easy mobility
- Up-to-date design, durable and portable
- Heavy Duty Steel construction
- 1.5m/5ft 5/8" high flow leader hose included
- Hold up 40m/130ft 5/8" high flow garden hose (Hose not included)
- Rust-proof brass/aluminum connections with Leak-Free Guarantee
- Corrosion-resistant powder coat finish
- Automatic layering mechanism to guide hose to retract without kink and tangles
- Non-slip crank handle
- Minimal assembly





01

AUTOMATIC RETRACTABLE  
AIR HOSE REEL

Model: Reel Cylinder  
DW-10A/20A 3/8"

FUNCTION & FEATURES:

- Free locking mechanism ensures hose remains in place when needed
- Slow rewind system which returns the air hose at a safe speed
- Auto layering mechanism which distributes air hose evenly back into the reel housing preventing it from jamming
- Supplied with metal mounting bracket and fixing kit for attachment onto walls
- Comes with a carry handle for easy mobility
- Equipped with 1/4" BSP fittings
- Ideal for garages and smaller workshops where space is limited



Item Number	DW-10A	DW-20A
Air Hose/Leader Hose	10m/33ft+1.5m/5.0ft	20m/65ft+1.5m/5.0ft
Hose Material	PVC	PVC
Hose Diameter	3/8"	3/8"
Working Pressure	8bar/116psi	8bar/116psi
Burst Pressure	24bar/348psi	24bar/348psi
Product Size (mm)	315*170*305	410x210x385
G.W/N.W(kg)	5.6/4.8	7.5/6.5
Outer Carton Size (mm)	335*190*325	430x230x405
Qty/Ctn	1	1
Qty 20GP/40GP/40HQ	1084/2244/2630	750/1530/1680
EAN	6949031909828	6949031909835

CERTIFICATES



★ NEW for 2023 ★



Hose Reel

Model: Reel Armor  
RSW-15A

- Ideal for garage, auto repair station to keep safe and clutter free
- All-steel construction with brass fittings, corrosion-resistant powder coat finish
- Heavy duty, single Arm hose reel
- Guide arm can be adjusted 3 different angles to enable air hose reel to be assembled on the wall, ceiling or floor.
- Multi-position ratchet action allows to easily wind the hose to the desired length.
- Mounting system allows the rotation of hose reel around metal bracket about 180 degrees
- Hose reel Includes 3/8 in x 50 ft hybrid air hose, rated for 300 PSI



Item Number	RSW-15A
Air Hose/Leader Hose	15m/50ft+1m/3.3ft
Hose Material	PVC+RUBBER
Hose Diameter	3/8"
Working Pressure	18bar
Burst Pressure	70bar
G.W/N.W(kg)	13.0/12.0
Outer Carton Size (mm)	420*185*440mm
Qty/Ctn	1
Qty 20GP/40GP/40HQ	870/1785/2140
EAN	6949031915171









## Garden Hose

GartenKraft garden hose is trustworthy and a necessity for any keen gardener. The hose has been crafted using high-quality PVC, which strengthens the flexible hose abrasion resistance, high pressure resistance, and ageing resistance and has an elastic outer fabric with dense and rugged lining that can protect the inner tube effectively, the reliable lining provides superior protection from thorns, puncture, sharp corners, extra resistant to bursting and leaks as well as defence from normal friction that can cause damage.

This superb range of strengthened water hose is developed to offer extreme durability and come in alternative lengths to suit the size of your garden, whether you have large or smaller area of garden to cover.

### FUNCTION & FEATURES

- Ideal for watering plants or lawn, washing pets, cleaning windows, and other outdoor cleaning, but be aware that not for drinking.
- Diameter: 1/2" (12mm\*17mm)
- Reinforced 3 ply polyester fibre hose
- UV & frost resistant
- Phthalate Free
- Withstands temperatures of between -10°C - +65°C
- Algae resistant and easy to clean
- Bursting pressure 24 bar
- Complete package with spray nozzle and connectors (15m package only)



### GH1215

#### Nozzle & Connectors Included 15m 1/2" (12\*17mm)

Hose Diameter	12*17mm
Material	PVC
Item Dimensions	380*380*80mm
GW(kg)	1.73kgs
EAN	6949031915140



### GH1220

#### 20m 1/2" (12\*17mm)

Hose Diameter	12*17mm
Material	PVC
Item Dimensions	380*380*100mm
GW(kg)	2.3kgs
EAN	6949031915157



03

## Hose Connectors





8-Pattern Spray Gun Set

Y3301	
1pc x 8-pattern spray gun 1pc x 1/2" hose connector 1pc x 1/2" hose connector with stop 1pc x 1/2-3/4" tap adaptor	
PACKING	Tie on card
INNER QTY (PCS)	12
MASTER QTY (PCS):	48
MASTER CBM (M³) / CARTON	0.08
GW (KGS) / CTN	15
EAN	6949031909620



Spray Nozzle Set

Y3303	
1pc x spray nozzle 1pc x 1/2" hose connector 1pc x 1/2" hose connector with stop 1pc x 1/2-3/4" tap adaptor	
PACKING	Tie on card
INNER QTY (PCS)	12
MASTER QTY (PCS):	96
MASTER CBM (M³) / CARTON	0.08
GW (KGS) / CTN	20
EAN	6949031909637



2-Hours Machnical Timer



Y34001	
Auto On/off,manual On/off No Batteries Required Water Pressure:15-120psi 1"tap Adapter With 3/4" Reducer End Time Reset Button	
PACKING	Tie on card
INNER BOX QTY(PCS)	8
MASTER CARTON QTY (PCS)	64
CBM / CTN	0.05
G.W. (KGS) / CTN	15
EAN	6949031909644



Y34002	
Auto On/off,manual On/off No Batteries Required Water Pressure:15-120psi 1"tap Adapter With 3/4" Reducer End Time Reset Button	
PACKING	Tie on card
INNER BOX QTY(PCS)	10
MASTER CARTON QTY (PCS)	40
CBM / CTN	0.05
G.W. (KGS) / CTN	9.4
EAN	6949031909651





Thanks for innovative design of **SQUARE CONNECTORS** to personalize your garden hose away from the monotonous round ones!



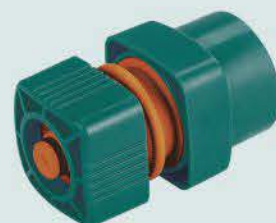
YF1001	
Two Way Tap Adaptor 1-3/4"	
PACKING	Tie on card
INNER BOX QTY(PCS)	30
MASTER CARTON QTY (PCS)	240
CBM / CTN	0.14
G.W.(KGS) / CTN	21
EAN	6949031909668



YF1002	
Two Way Tap Adaptor 3/4-1/2"	
PACKING	Tie on card
INNER BOX QTY(PCS)	30
MASTER CARTON QTY (PCS)	240
CBM / CTN	0.14
G.W.(KGS) / CTN	21
EAN	6949031909675



YF1003	
Hose Connector 1/2"	
PACKING	Tie on card
INNER BOX QTY(PCS)	60
MASTER CARTON QTY (PCS)	240
CBM / CTN	0.043
G.W.(KGS) / CTN	19.5
EAN	6949031909682



YF1004	
Hose Connector 1/2" With Stop	
PACKING	Tie on card
INNER BOX QTY(PCS)	60
MASTER CARTON QTY (PCS)	240
CBM / CTN	0.043
G.W.(KGS) / CTN	19.5
EAN	6949031909699



YF1005	
Hose Connector 3/4"	
PACKING	Tie on card
INNER BOX QTY(PCS)	60
MASTER CARTON QTY (PCS)	240
CBM / CTN	0.054
G.W.(KGS) / CTN	22
EAN	6949031909705



YF1006	
Hose Connector 3/4" With Stop	
PACKING	Tie on card
INNER BOX QTY(PCS)	60
MASTER CARTON QTY (PCS)	240
CBM / CTN	0.054
G.W.(KGS) / CTN	22
EAN	6949031909712



YF1007	
Hose Mender 1/2"	
PACKING	Tie on card
INNER BOX QTY(PCS)	60
MASTER CARTON QTY (PCS)	240
CBM / CTN	0.035
G.W.(KGS) / CTN	16
EAN	6949031909729



YF1008	
Hose Mender 3/4-1/2"	
PACKING	Tie on card
INNER BOX QTY(PCS)	60
MASTER CARTON QTY (PCS)	240
CBM / CTN	0.035
G.W.(KGS) / CTN	16
EAN	6949031909736



YF1009	
Tap Adaptor 1"	
PACKING	Tie on card
INNER BOX QTY(PCS)	60
MASTER CARTON QTY (PCS)	480
CBM / CTN	0.077
G.W.(KGS) / CTN	17
EAN	6949031909743



YF1010	
Tap Adaptor 1-3/4"	
PACKING	Tie on card
INNER BOX QTY(PCS)	60
MASTER CARTON QTY (PCS)	480
CBM / CTN	0.092
G.W.(KGS) / CTN	18
EAN	6949031909750



YF1011	
Tap Adaptor with On/off Valve 3/4"	
PACKING	Tie on card
INNER BOX QTY(PCS)	30
MASTER CARTON QTY (PCS)	360
CBM / CTN	0.11
G.W.(KGS) / CTN	20
EAN	6949031909767



YF1012	
Flexible Hose Connector 1/2"	
PACKING	Tie on card
INNER BOX QTY(PCS)	60
MASTER CARTON QTY (PCS)	240
CBM / CTN	0.08
G.W.(KGS) / CTN	19.5
EAN	6949031909774



# 04

## Garden Tools

**GartenKraft** selected range of garden tools are ergonomic, simple, rugged, long lasting and well suited for almost all your gardening needs and will surely bring tons of convenience and fun for you in looking after your plants and flowers.







Garden Flower Scissors

FUNCTION & FEATURES:

- Ideal for pruning garden plants, flowers, potted landscape
- Delicate design, portable and lightweight
- Pruning diameter up to 8mm / 0.32inch
- Sturdy and ergonomic floral scissors with outstanding sharpness
- Easy to grasp with anti-skidding forefinger grip
- Small amount of lubricating oil needed to keep its shining and sharpness

Item Number	GT001
Qty/ctn (PCS)	50
G.W./N.W. (KGS)	7.7/5.5
Carton size (MM)	715*285*225mm
Qty 20GP/40GP/40HQ (PCS)	35000/72100/79700
EAN	6949031915232



Garden Pruners

FUNCTION & FEATURES:

- Suitable for 5/8" diameter size branches pruning and also applicable to flower trimming, plastic or metal wire cutting
- Ergonomic structure & light weight
- SK5 rust-resistant carbon steel blade with outstanding sharpness
- Non-slip handle for comfortable grip
- Good resilience spring makes pruning work effortlessly, packed with additional spring for substitution
- Safety locking mechanism to keep sharp blades securely closed when not in use
- Teflon coating helps to keep pruning shears from rust and sticking plant sap



Item Number	GT002
Qty/ctn(PCS)	50
G.W./N.W. (KGS)	10.45/8.5
Carton size (MM)	565*305*260mm
Qty 20GP/40GP/40HQ (PCS)	36000/74400/84000
EAN	6949031915249

Hand Trowel

FUNCTION & FEATURES:

- Ideal for filling pots, tubs and baskets with soil or compost quickly and efficiently thanks to the wide and deeply dished blade
- Polished stainless steel, heat treated,durable and lasting anti-corrosion
- Curved heads and smooth edge make breaking up tough soil easy
- Ergonomically designed soft, contoured handles to reduce hand and wrist fatigue while working
- Sturdy construction and thick steel components that promise longevity
- Hanging hole for convenient storage

Item Number	GT003
Qty/ctn(PCS)	50
G.W./N.W. (KGS)	12.25/12.2
Carton size (MM)	540*355*210mm
Qty 20GP/40GP/40HQ (PCS)	40250/82150/93150
EAN	6949031915256





## Transplant Trowel

### FUNCTION & FEATURES:

- Designed for transplanting small perennials and bulbs
- Depth markings to help find the proper planting depths.
- Polished stainless steel, heat treated, durable and lasting anti-corrosion
- Curved heads and smooth edge make breaking up tough soil easy
- Ergonomically designed soft, contoured handles to reduce hand and wrist fatigue while working
- Sturdy construction and thick steel components that promise longevity
- Hanging hole for convenient storage

Item Number	GT004
Qty/ctn(PCS)	50
G.W./N.W. (KGS)	10.3/10.25
Carton size (MM)	540*355*210mm
Qty 20GP/40GP/40HQ (PCS)	40250/82150/93150
EAN	6949031915263

## Hand Cultivator

### FUNCTION & FEATURES:

- A wide three-prong head for digging and scratching in the soil, loosening dirt and creating trenches.
- Durable stainless steel cultivator head for no loosening or bending at the neck or break while digging
- Forged and polished stainless steel, heat treated, durable and lasting anti-corrosion
- Ergonomically designed soft, contoured handles to reduce hand and wrist fatigue while working
- Sturdy construction and thick steel components that promise longevity
- Hanging hole for convenient storage

Item Number	GT005
Qty/ctn(PCS)	50
G.W./N.W. (KGS)	10.2/10.1
Carton size (MM)	540*365*250mm
Qty 20GP/40GP/40HQ (PCS)	32700/67150/76550
EAN	6949031915270

## Gardening Gloves

### Nitrile Gardening Gloves

#### FUNCTION & FEATURES:

- Ideal for gardening, yard landscaping, DIY housework
- Full sizes gardening gloves for women & men
- Lightweight & excellent dexterity to precision work
- Stretchy and breathable knitted base for a comfortable fit, easy on and off
- Soft but sturdy micro-foamed latex coating reduces fatigue
- Non-slip grip allows you to perform well when weeding, planting, digging, seeding, harvesting fruits and vegetables
- Thicken fingertip protects your hands and nails perfectly
- Superior long and flexible cuff keeps dirt and debris out
- Machine washable for long time use



GT006

### Waterproof Gardening Gloves

#### FUNCTION & FEATURES:

- Perfect for gardening, farming, landscaping, weeding, DIY & home improvement in all weather conditions
- Full sizes gardening gloves for women & men
- Fully waterproof latex coating to keep hands clean & dry
- Tough double latex on palm & fingers to offer extra protection
- Sandy latex technology delivers breathability & dexterity
- Excellent grip when working with garden tools.
- Long elastic cuff to keep dirt & mud out.
- Machine washable



GT007

Item Number	GT006	GT007
Qty/ctn(PCS)	100	100
G.W./N.W. (KGS)	4.5/3.8	8.3/6.3
Carton size (MM)	580*300*220	600*320*240
Qty 20GP/40GP/40HQ (PCS)	84100/172600/194400	67500/140300/158400
EAN	6949031915287	6949031915294



# 05

## Garden Sprayer



**GartenKraft** pressure sprayer or USB chargeable electric sprayer is the revolutionary new way to apply detailing liquids without any water hoses, buckets, or tiring your fingers: just prime, point, and effortlessly shoot a fine mist of product anywhere, anytime!





Pressure Sprayer

FUNCTION & FEATURES:

- Full Function Atomizer and Pump Sprayer
- Extra thick heavy duty 1.5L UV resistant plastic bottle
- Prelabeled measuring marks on bottle
- Fully adjustable nozzle from fine mist to jet stream
- Locking trigger for nonstop stream
- Removable nozzle for easy cleaning
- Ergonomic handle for ultimate comfort



Item Number	HTS001
Material	HDPE, PP, PVC, ABS
Capacity	1.5L
Qty/ctn(PCS)	20
G.W./N.W. (KGS)	6.9/6.8
Carton size (MM)	660*480*330mm
Qty 20GP/40GP/40HQ (PCS)	5860/12220/14000
EAN	6949031915119



USB Chargeable Electric Sprayer

FUNCTION & FEATURES:

- Perfect for garden plants watering, indoor plant mister, weeding, insecticide, disinfection, alcohol, sterilization, air humidifying, glass cleaning
- Continuously automatic watering with long press or double press ON/OFF button
- USB Chargeable sprayer with LED power indicator
- Long lifespan and quick chargeable battery to keep max 2hours working time
- Prelabeled measuring marks on bottle
- Safety locking mechanism to help avoid misoperation to turn on
- Filtration mineral ball attached to sucking water tube
- Fully adjustable nozzle from fine mist to jet stream
- Removable nozzle for easy cleaning
- Ergonomic handle for ultimate comfort



Item Number	HTS002
Material	HDPE, PP, PVC, ABS
Capacity	1.1L
Qty/ctn(PCS)	20
G.W./N.W. (KGS)	6.8/6.4
Carton size (MM)	635*512*322mm
Qty 20GP/40GP/40HQ (PCS)	5840/12160/13820
EAN	6949031915126



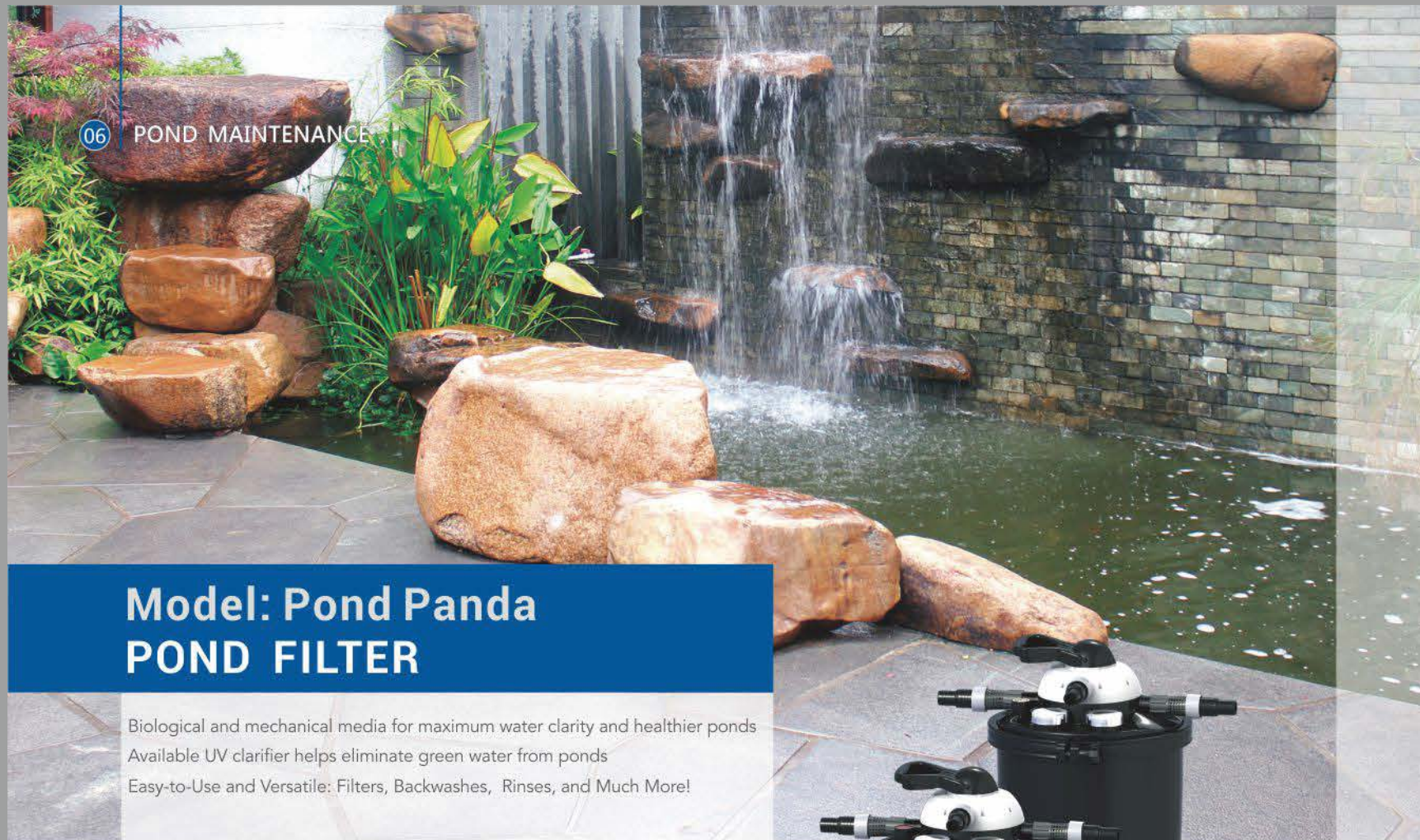
# 06

## Pond Maintenance



With the vision of improving pond water and helping pond lovers optimally enjoy their pond life, Gartenkraft is committed to research and develop pond maintenance products in wide and deep aspects. Filter and vacuum cleaner are always key supports on keeping pond water clean and biological.





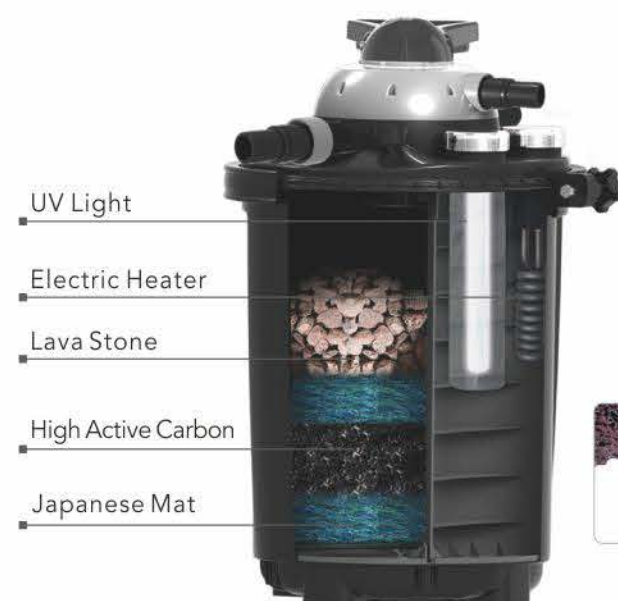
## Model: Pond Panda POND FILTER

Biological and mechanical media for maximum water clarity and healthier ponds  
Available UV clarifier helps eliminate green water from ponds  
Easy-to-Use and Versatile: Filters, Backwashes, Rinses, and Much More!



### 1025PF 1050PF 1075PF 1135PF

Pond filter is the core and soul of any pond, with minimal and easy maintenance it brings you a clean healthy pond and makes your life happier. Pond Panda as complete set is composed of filter, pond pump, uv-c unit, hose and all adaptors. With high pressure it is also idea for a waterfall



UV Light

Electric Heater

Lava Stone

High Active Carbon

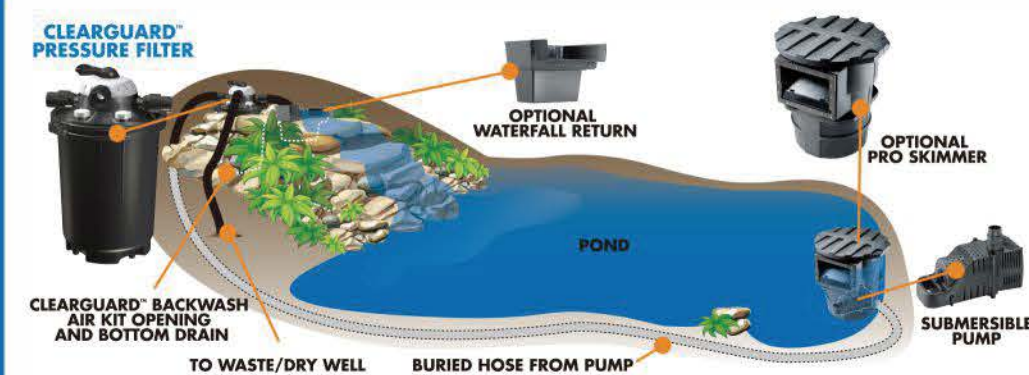
Japanese Mat



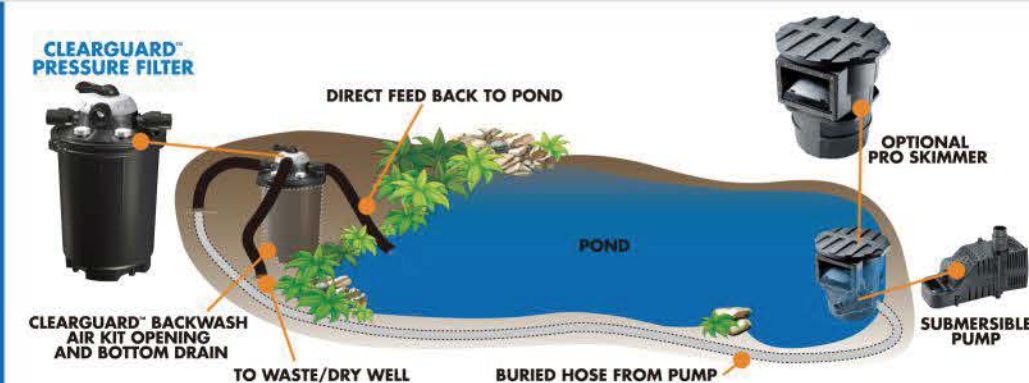
Pond Maintenance

## INSTALLING YOUR POND FILTER

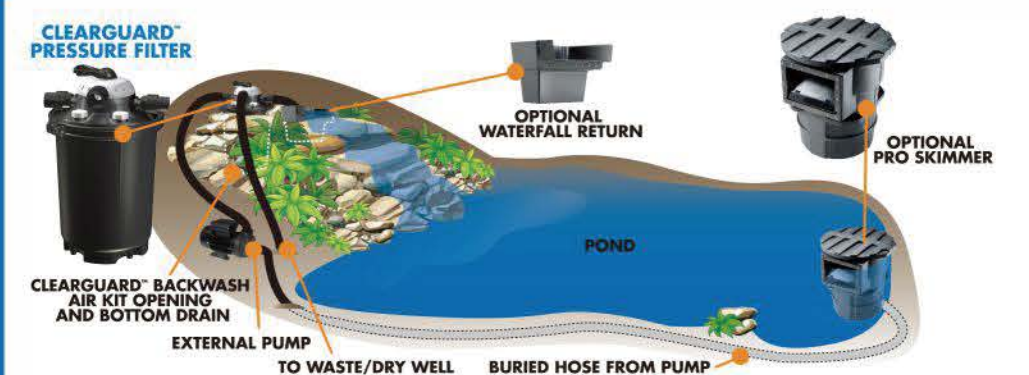
### TYPICAL INSTALLATION



### DIRECT RETURN



### ALTERNATE INSTALLATION



Item Number	1025PF		1050PF	
FLOW RATE	8000L/H	2100GAL	10000L/H	2640GAL
TANK VOLUME	25L	6.6GAL	50L	13.2GAL
PACKAGE	690x460x330(mm)	27.17"x18.11"x12.99"	440x440x720(mm)	17.32"x17.32"x28.35"
G.W.	14.0KGS	30.87LBS	15.7KGS	33.46LBS
20'GP/40'GP/40'HC	280/590/680		210/420/516	
EAN	6949031915188		6949031915195	

Item Number	1075PF		1135PF	
FLOW RATE	10000L/H	2640GAL	18600L/H	4900GAL
TANK VOLUME	75L	19.8GAL	135L	35.5GAL
PACKAGE	440x440x870(mm)	17.32"x17.32"x34.25"	625x625x995(mm)	24.6"x24.6"x39.17"
G.W.	18.7KGS	41.23LBS	38.0KGS	83.79LBS
20'GP/40'GP/40'HC	160/335/399		63/133/168	
EAN	6949031915201		6949031915218	



## Model: Pond Ironman

### POND CLEANER WITH INTEGRATED DISCHARGE PUMP

#### FUNCTION & FEATURES:

- For all pond surfaces
- Reduce timely pond maintenance
- Powerful motor removes sludge, debris, and algae leaving your pond clean and healthy
- Auto discharge feature of the pond sludge vacuum allows for continuous use without having to wait through time consuming discharge cycles

#### VACUUM TECHNICAL DATA:

Mains: 230 V ~ 50 Hz  
 Motor: 1200W/1400W  
 (Actual: 1200W)  
 Vacuity: 18KPa  
 Suction hose diameter: 35 mm  
 Suction hose length: 4 m  
 Drain hose diameter: 35 mm  
 Drain hose length: 1.5 m  
 Tank size: 35L  
 Power cord length: 4m

#### PUMP TECHNICAL DATA:

Rated power: 600W  
 Flow rate max.: 11500L/h  
 Max. head: 7m

Item Number	1035MC
Carton Size(MM)	370*367*610
Qty 20GP/40GP/40HQ(PCS)	323/689/803
EAN	6949031915300

#### STANDARD ACCESSORIES:



## Model: Pond Star VACUUM CLEANER

#### FUNCTION & FEATURES:

- 4 in 1: Pond & Pool cleaning, Wet & Dry Vacuum cleaner
- 35 Litre content
- Wheels for easy transport
- Automatic function for emptying
- 1400 Watt, Size 34.7x34.7x60 cm
- Comes with 3 suction heads, 4m suction hose and 1.5 m discharge hose
- Maximum suction height 1.72 m

2 Meter



Many pond maintenance needs can be addressed by removing sludge and debris build-up around the pond. With the Pond Star cleaner, this can be done in minutes, instead draining and refilling the pond over hours or days. With its powerful 1400W motor, assorted nozzle attachments and many accessories, Pond Star cleaner not only excels at pond cleaning but can also be used as wet or shop vacuum around the house.

Item Number	1035PC
Carton Size(MM)	370*367*610
Qty 20GP/40GP/40HQ(PCS)	323/689/803
EAN	6949031915317





To create a better life



To create a better life

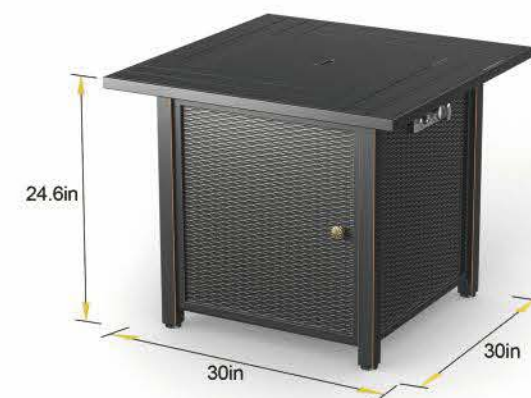


★NEW for 2023★

## Model: Volcano FULL STEEL FIRE PIT 30"

### FUNCTION & FEATURES

- Ideal outdoor furniture for backyard, patio, balcony and garden
- CSA approved
- 30 inch full tabletop fire pit with top lid, easy to assemble
- Sturdy steel for durability and long term use
- Fast and safety electronic ignition with flame out protection
- Hidden Tank Compartment to hide max 20 lbs propane tank perfectly
- Volcanic stone included



Item Number	FP001
Material	Steel
Finish Type	Antique, Painted
Item Dimensions (mm)	624x762x762
Outer Carton Size (mm)	820x820x230
QTY 20GP/40GP/40/HQ	140/308/420
Fuel Type	Propane
EAN	6949031915096



## Model: Blue Rock WICKER-WOVEN FIRE PIT 42"

### FUNCTION & FEATURES

- Ideal outdoor furniture for backyard, patio, balcony and garden
- CSA approved
- 42 inch full tabletop fire pit with top lid, easy to assemble
- Built using sturdy steel, tempered glass, high-quality water-resistant wicker
- Fast and safety electronic ignition with flame out protection
- Hidden Tank Compartment to hide max 20 lbs propane tank perfectly
- Weather resistant by optional glass wind guard
- Glass stone included



Item Number	FP002
Material	Steel, Tempered Glass, Polyethylene
Finish Type	Antique, Painted
Item Dimensions(mm)	1117*703*624
Outer Carton Size (mm)	1140*770*280
QTY 20GP/40GP/40/HQ	130/248/279
Fuel Type	Propane
EAN	6949031915102



# 02

## Patio Heater & Fire Pit



Full body of propane gas fire pit table is made of durable steel, provides clean, smokeless and realistic campfires. It is a great addition to your outdoor setting to share the good time of warm and comfortable experience with your friends and family.



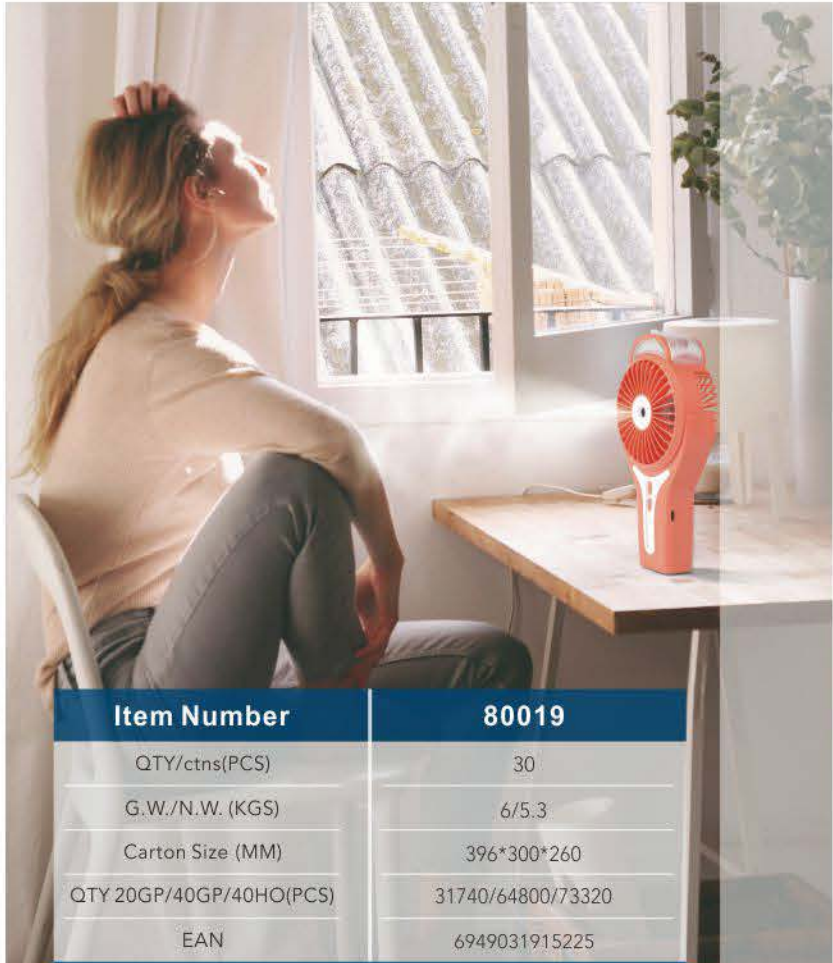


80019 Misting Fan

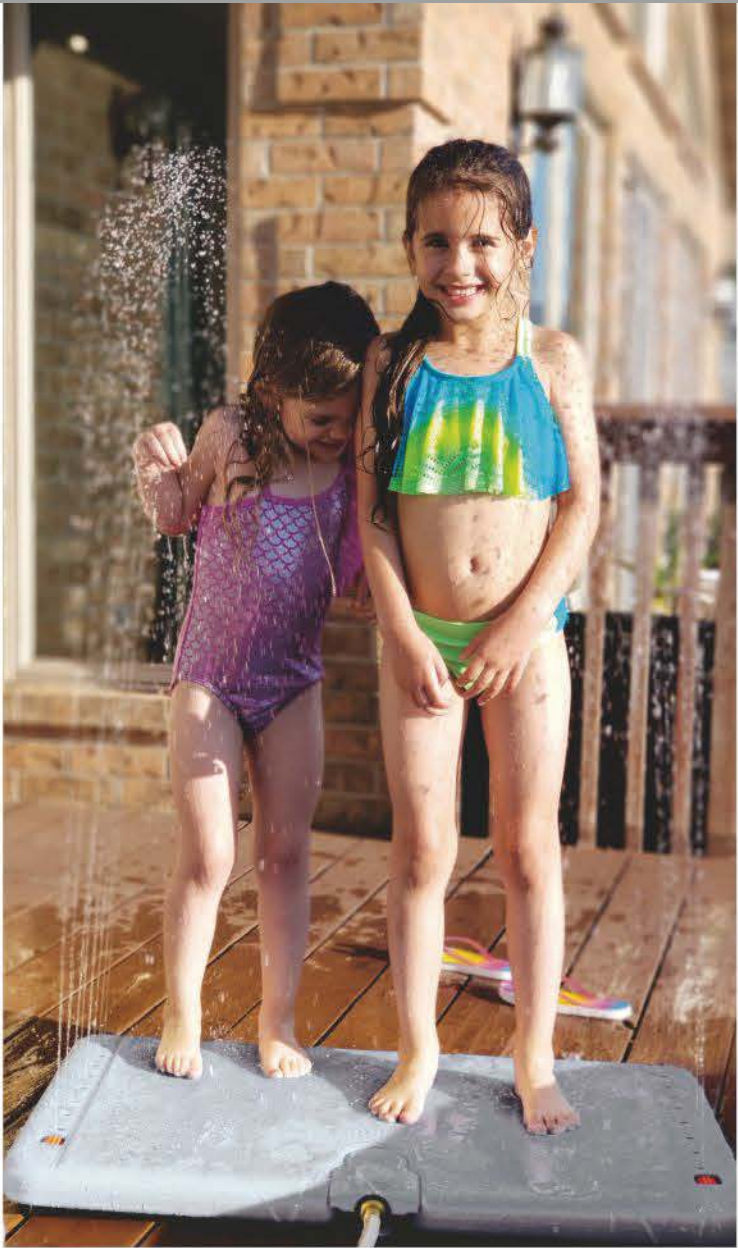


SPECIFICATION

- Power source: AC/DC
- USB rechargeable, cable included
- LED indicator light
- Multiple working modes: Fan&Misting/Fan only/Misting only
- Fan with 3 speed level
- Item size: 10\*5\*20cm
- Color options: Pastel Turquoise, Coral Bell, Blue, White, Black



Item Number	80019
QTY/ctns(PCS)	30
G.W./N.W. (KGS)	6/5.3
Carton Size (MM)	396*300*260
QTY 20GP/40GP/40HQ(PCS)	31740/64800/73320
EAN	6949031915225



1540 Splash Pad

- Set up in seconds and no tools required
- Works under the normal city water pressure (No more than 5 Bars)
- Weight activate to Splash



Item Number	1540
Maximum Loading	15kgs-120kgs
Height of Water Splashing	2.0m-2.5m
Product Dims.	85×53×6cm 33.46"×20.87"×2.36"
Carton Dims.	86×54×7cm 33.86"×21.26"×27.56"
G.W.	4.5kgs/9.92lbs
QTY in 20'GP/40'GP/40'HQ	808/1740/1956pcs
EAN	6949031915324



Cooling ties help you cool down, relax and help regulate body temperature through the natural process of evaporation. Cooling ties are made with lightweight, comfortable cotton and cooling crystals to provide cooling relief at home or on the job.

★ **STORAGE:** Always store in clean, dry conditions. Do not store in places subject to direct, strong sunlight.

APPLICATION

- Gardening
- Exercising
- Hot Flashes
- Working Outdoors
- Feel more comfortable and relaxed
- Avoid heat exhaustion
- Promotes safety by regulating body temperature

90001 Cooling Tie  
How cooling tie works

- Activate by soaking in water
- Special polymers absorb water in capacity of far more their weight.
- Wrap cooling tie around your head or neck. It brings cooling power where you need it most
- Re-use by just soaking in water
- Tie closure for comfortable fit

SPECIFICATION

Material: cotton fabric, crystal polymers  
Available color: blue, red, orange, white, black

90003 Cooling Bandana

- Polycotton material with cooling crystals.
- Soak in water for 7-8 minutes, squeeze out excess to activate
  - Wear it on your head to facilitate cooling sensation
  - Cooling effects last for hours

SPECIFICATION

Material: polycotton, crystal polymers  
Available color: blue, red, orange, white, black



Model	EAN	Packaging	Master Carton (cm)	Quantity Per Master Ctn	G.W./N.W. (kgs)	20'GP (ctns)	40'GP (ctns)	40'HQ (ctns)
90001	6949031900764	Color Box	43x27x27	96pcs	3.5/2.8	903	1871	2194
90003	6949031900771	Color Box	43x41x27	96pcs	4.9/4.4	596	1234	1447



90005 Cooling Towel 32"X16"/81cmX40cm  
90004 Cooling Towel 32"X8"/81cmX20cm

Starmist Cooling Towels keep you 20°F /11°C cooler than the outdoor ambient temperature. Simply activate in water and it is like having your own personal air conditioner on you at all times. Stay cool and be safe while working outdoors, exercising, gardening, or relaxing at the beach.

How it works: The material is highly absorbent, (like a sponge) and can absorb up to times its weight in water. Once wet, the towels produce a cooling affect with the help of simple evaporation. As long as the towel is wet, the towels will stay cool. Exposure to the air will keep it cooler even longer.

How to use: pre-wash and air dry before first use

- Dip the cooling towel in cold water for complete adsorption
- Wring out the excess water and wear the cooling towel around neck, head or wrist to enjoy cooling & refreshing
- Soak the cooling towel again for repeated use when dry

SPECIFICATION

- Material: 75% PVA, 17.4% water, 7.5% mesh, 0.1% toner
- Available color: blue, green, pink



Model	EAN	Packaging	Master Carton (cm)	Quantity Per Master Ctn	G.W./N.W. (kgs)	20'GP (ctns)	40'GP (ctns)	40'HQ (ctns)
90004	6949031903550	Plastic Container	58x47.5x53.5	96pcs	29.5/26.7	187	387	453
90005	6949031903567	Plastic Container	52x40.5x39.5	96pcs	17/16	337	699	819

STARMIST

Mist Cooling







### 80003 Misty 10oz/300ml

- 10oz water reservoir
- 3' of coiled polyethylene tubing
- On/off valve
- Alligator clip for "hands free" use
- Built-in belt clip

### 80004 Misty 16oz/470ml

- 16oz water reservoir
- Convenient carrying case/nylon sleeve
- Lasts an average of 2 to 3 hours when used intermittently
- 3' of polyethylene tubing
- On/off valve
- Badge Clip to make mister "hands free"
- Can fit in most bottle holders of a bicycle and most cup holders



### 80005 Misty 24oz/700ml

- 24oz water reservoir
- Convenient carrying case nylon sleeve-with 1 mesh pocket and 1 zipper pocket
- Lasts an average of 3-4 hours when used intermittently
- 3' of polyethylene tubing
- On/off valve
- Built-in strap that can be worn around your waist or over your shoulder
- Available in gray case with blue stripe



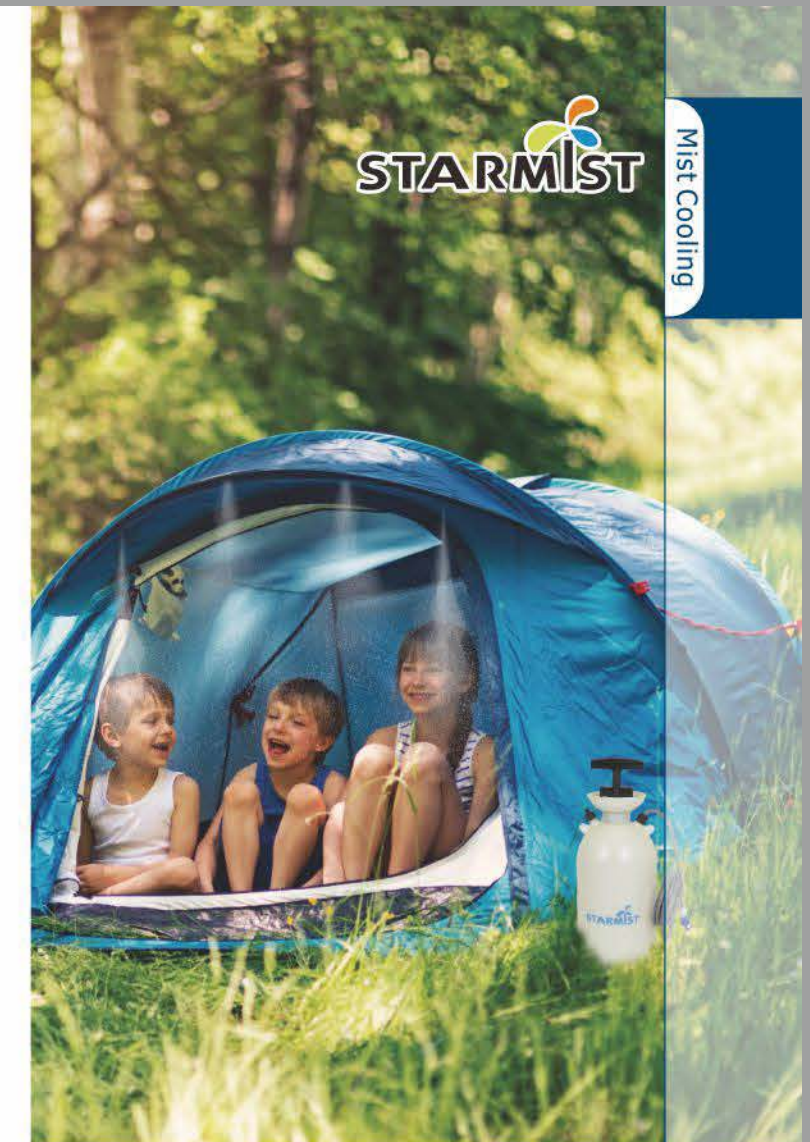
Model	EAN	Packaging	Master Carton (cm)	Quantity Per Master Ctn	G.W./N.W. (kgs)	20'GP (ctns)	40'GP (ctns)	40'HQ (ctns)
80003	6949031900641	Clamshell	38x25x30	6pcs	3.5/2.5	1028	2110	2376
80004	6949031900658	Clamshell	50x33x31.5	12pcs	7.5/6	599	1240	1412
80005	6949031900665	Clamshell	49.5x28.5x33	12pcs	8/7.2	672	1388	1566

### 80006 Camping Mister 3 Litre 80007 Camping Mister 5 Litre 80008 Camping Mister 8 Litre

The portable Camping Mister misting system provides a cool environment from the heat wherever you need it. It comes pre-assembled with clip attachments for easy 'set up' and 'take down' and includes a portable water tank in 3L/5L/8L for when you can't find a water source. Provides 3m(10 feet) of lead line and 3m(10 feet) of mist line to cool the ambient temperature up to 2 /35°F. It's perfect for your camping trip.

#### FEATURES

- Potable and effortless use
- Safety locking pressure-release valve
- Heavy-Duty plastic tank with top funnel for easy (re)filling
- Ideal for canopies, RV's&motor homes, tents, boats, awnings



Model	EAN	Tank Vol.	Water Pressure	G.M.	PCS/Master Carton	Carton Dims.	QTY in 20' GP/40' GP/40HQ
80006	6949031915331	3L	<2.5kgs	0.7 kgs	6	56x37.5x37.5cm	2160/4536/560
80007	6949031915348	5L	<2.5kgs	0.8 kgs	6	56x37.5x43.5cm	1800/3780/448
80008	6949031915355	8L	<2.5kgs	1 kgs	6	56x37.5x55cm	1440/3024/339



HIGH PRESSURE SLIP LOCK FITTING



3/8" Nozzle Fitting



Model Number	Quantity Per Ctn	Master Carton Size(cm)	G.W./N.W.(KG)	20'GP(ctns)	40'GP(ctns)	40'HQ(ctns)
060683	216	54.5x42.5x23.5	20.4/19.4	518	1074	1259



3/8" Coupling Fitting



Model Number	Quantity Per Ctn	Master Carton Size(cm)	G.W./N.W.(KG)	20'GP(ctns)	40'GP(ctns)	40'HQ(ctns)
061683	216	54.5x42.5x23.5	9.6/8.6	518	1074	1259



3/8" Elbow Fitting



Model Number	Quantity Per Ctn	Master Carton Size(cm)	G.W./N.W.(KG)	20'GP(ctns)	40'GP(ctns)	40'HQ(ctns)
062683	216	54.5x42.5x23.5	11.4/10.4	518	1074	1259



3/8" End Cap Fitting



Model Number	Quantity Per Ctn	Master Carton Size(cm)	G.W./N.W.(KG)	20'GP(ctns)	40'GP(ctns)	40'HQ(ctns)
063683	216	54.5x42.5x23.5	9.6/8.6	518	1074	1259

80001 Mini Mister 1oz/30ml

This Mini Mister has a 1 ounce/30ml fluid capacity to create an ultra fine mist. This product never needs batteries because of the amazing push button technology. Easy to use and portable to fit in your purse & beach bag

- Micromist technology
- Fill cold water only, no drinking
- 10-15 times pumping to pressurize mister with air

SPECIFICATION:

- Material: ABS + AS (Acrylonitrile-styrene Copolymer)
- Working Pressure: Max.6bar/87psi

◆Compliance with European Food Contact Regulations and available for the test report issued by SGS

80002 Mini Mister 2.5oz/75ml

Get the pump action with the personal water mister. Great for outdoors to help eliminate heat stress on these hot summer days. Just pump and press the button to get a cool and steady mist. Holds 2.5oz/75ml of fluid.

- This mister provides event attendees with much-needed relief on those scorching summer days-no batteries required
- Simply pump the refillable bottle 10-15 times to pressurize it with air, then press the misting button to spray an ultra-fine mist
- The plastic mister is no bigger than a travel-size bottle and includes a removable wrist strap for easy carry and storage
- Perfect promotional idea for outdoor concerts, festivals, graduation ceremonies, parades, reunions and so much more
- Fill cold water only, no drinking

SPECIFICATION:

- Material: ABS + AS (Acrylonitrile-styrene Copolymer)
- Working Pressure: Max.6bar/87psi

◆Equipped with Pressure Release Valve to avoid explosion if over pressurizing

Model	EAN	Packaging	Master Carton (cm)	Quantity Per Master Ctn	G.W./N.W. (kgs)	20'GP (ctns)	40'GP (ctns)	40'HQ (ctns)
80001	6949031900689	Clamshell	31x23x23.5	12pcs	2.2/1.2	1670	3815	4295
80002	6949031900696	Clamshell	36x31.5x28.5	12pcs	2.6/1.6	860	1980	2220

STARMIST

Mist Cooling







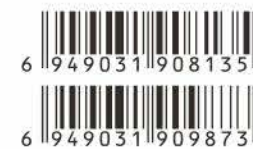
**3/8" Elbow Fitting**  
**1/4" Elbow Fitting**



Model Number	Quantity Per Ctn	Master Carton Size(cm)	G.W./N.W.(KG)	20'GP(ctns)	40'GP(ctns)	40'HQ(ctns)
032383	216	54.5x42.5x23.5	3.8/2.8	518	1074	1259
032341	216	54.5x42.5x23.5	3.7/2.7	518	1074	1259



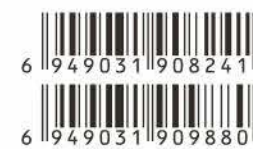
**3/8" End Fitting With Nozzle Holder**  
**1/4" End Fitting With Nozzle Holder**



Model Number	Quantity Per Ctn	Master Carton Size(cm)	G.W./N.W.(KG)	20'GP(ctns)	40'GP(ctns)	40'HQ(ctns)
033383	216	54.5x42.5x23.5	3.6/2.6	518	1074	1259
033341	216	54.5x42.5x23.5	3.5/2.5	518	1074	1259



**3/8" Swivel Nut**  
**1/4" Swivel Nut**



Model Number	Quantity Per Ctn	Master Carton Size(cm)	G.W./N.W.(KG)	20'GP(ctns)	40'GP(ctns)	40'HQ(ctns)
034383	216	56x43x37	6.4/5.4	314	651	764
034341	216	56x43x37	6.3/5.3	314	651	764

## LOW PRESSURE SLIP LOCK FITTING



**3/8" Tee-fitting With Nozzle Holder**  
**1/4" Tee-fitting With Nozzle Holder**



Model Number	Quantity Per Ctn	Master Carton Size(cm)	G.W./N.W.(KG)	20'GP(ctns)	40'GP(ctns)	40'HQ(ctns)
040483	216	54.5x42.5x23.5	9.2/8.2	518	1074	1259
040441	216	54.5x42.5x23.5	9.1/8.1	518	1074	1259



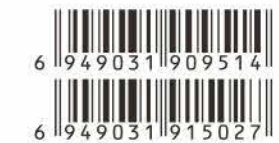
**3/8" Three Way Tee Fitting**  
**1/4" Three Way Tee Fitting**



Model Number	Quantity Per Ctn	Master Carton Size(cm)	G.W./N.W.(KG)	20'GP(ctns)	40'GP(ctns)	40'HQ(ctns)
041483	216	54.5x42.5x23.5	6.2/5.2	518	1074	1259
041441	216	54.5x42.5x23.5	6.1/5.1	518	1074	1259



**3/8" Elbow Fitting**  
**1/4" Elbow Fitting**



Model Number	Quantity Per Ctn	Master Carton Size(cm)	G.W./N.W.(KG)	20'GP(ctns)	40'GP(ctns)	40'HQ(ctns)
042483	216	54.5x42.5x23.5	5.3/4.3	518	1074	1259
042441	216	54.5x42.5x23.5	5.2/4.2	518	1074	1259



**3/8" End Fitting With Nozzle Holder**  
**1/4" End Fitting With Nozzle Holder**



Model Number	Quantity Per Ctn	Master Carton Size(cm)	G.W./N.W.(KG)	20'GP(ctns)	40'GP(ctns)	40'HQ(ctns)
043483	216	54.5x42.5x23.5	4.5/3.5	518	1074	1259
043441	216	54.5x42.5x23.5	4.4/3.4	518	1074	1259



**3/8" Swivel Nut**  
**1/4" Swivel Nut**



Model Number	Quantity Per Ctn	Master Carton Size(cm)	G.W./N.W.(KG)	20'GP(ctns)	40'GP(ctns)	40'HQ(ctns)
044483	270	56x43x37	7.2/6.2	314	651	764
044441	270	56x43x37	7.1/6.1	314	651	764



**3/8" Anti-Clogging Filter**  
**1/4" Anti-Clogging Filter**



Model Number	Quantity Per Ctn	Master Carton Size(cm)	G.W./N.W.(KG)	20'GP(ctns)	40'GP(ctns)	40'HQ(ctns)
045483	270	56x43x37	7.2/6.2	314	651	764
045441	270	56x43x37	7.1/6.1	314	651	764



**3/8" Pressure Reducer**  
**1/4" Pressure Reducer**



Model Number	Quantity Per Ctn	Master Carton Size(cm)	G.W./N.W.(KG)	20'GP(ctns)	40'GP(ctns)	40'HQ(ctns)
046483	270	56x43x37	7.2/6.2	314	651	764
046441	270	56x43x37	7.1/6.1	314	651	764





Anti-dripping Nickel Plated Brass Nozzle



Model Number	Quantity Per Ctn	Master Carton Size(cm)	G.W./N.W.(KG)	20'GP(ctns)	40'GP(ctns)	40'HQ(ctns)
000303	288	39x36x31	5.6/4.6	636	1318	1545



Detachable Brass Nozzle



Model Number	Quantity Per Ctn	Master Carton Size(cm)	G.W./N.W.(KG)	20'GP(ctns)	40'GP(ctns)	40'HQ(ctns)
000304	288	39x36x31	5.6/4.6	636	1318	1545



5cm/10cm/15cm/20cm/30cm/40cm/50cm Extension Nozzle Holder



Model Number	Quantity Per Ctn	Master Carton Size(cm)	G.W./N.W.(KG)	20'GP(ctns)	40'GP(ctns)	40'HQ(ctns)
000305	288	39x36x31	4.7/3.7	636	1318	1545

## CLAMP/CLIP



3/8" Mounting Clip



Model Number	Quantity Per Ctn	Master Carton Size(cm)	G.W./N.W.(KG)	20'GP(ctns)	40'GP(ctns)	40'HQ(ctns)
000400	216	67.5x49.5x23.5	5.8/4.3	354	734	860



3/8" Hanger Clip



Model Number	Quantity Per Ctn	Master Carton Size(cm)	G.W./N.W.(KG)	20'GP(ctns)	40'GP(ctns)	40'HQ(ctns)
000401	216	67.5x49.5x23.5	11.9/10.4	354	734	860



3/8" Screw Cable Clamp



Model Number	Quantity Per Ctn	Master Carton Size(cm)	G.W./N.W.(KG)	20'GP(ctns)	40'GP(ctns)	40'HQ(ctns)
000402	216	67.5x49.5x23.5	11.9/10.4	354	734	860



3/8" Replaceable Clamp



Model Number	Quantity Per Ctn	Master Carton Size(cm)	G.W./N.W.(KG)	20'GP(ctns)	40'GP(ctns)	40'HQ(ctns)
000403	216	67.5x49.5x23.5	11.9/10.4	354	734	860

## HOSE CUTTER



Hose Cutter



Model Number	Quantity Per Ctn	Master Carton Size(cm)	G.W./N.W.(KG)	20'GP(ctns)	40'GP(ctns)	40'HQ(ctns)
000500	216	67.5x49.5x23.5	5.3/4.3	354	734	860

## LOW PRESSURE PUSH IN FITTING

3/8" Tee-fitting With Nozzle Holder  
1/4" Tee-fitting With Nozzle Holder

Model Number	Quantity Per Ctn	Master Carton Size(cm)	G.W./N.W.(KG)	20'GP(ctns)	40'GP(ctns)	40'HQ(ctns)
030383	216	54.5x42.5x23.5	5.3/4.3	518	1074	1259
030341	216	54.5x42.5x23.5	5.2/4.2	518	1074	1259

3/8" Three Way Tee Fitting  
1/4" Three Way Tee Fitting

Model Number	Quantity Per Ctn	Master Carton Size(cm)	G.W./N.W.(KG)	20'GP(ctns)	40'GP(ctns)	40'HQ(ctns)
031383	216	54.5x42.5x23.5	4/3	518	1074	1259
031341	216	54.5x42.5x23.5	3.9/2.9	518	1074	1259



Electronic Misting Timer

New electronic timer designed by us specially for misting purpose, which could be timing by second in Frequence&Run Time instead by minute only as old models. It is very small and simple to operate but quite effective for misting program set up.

SPECIFICATION

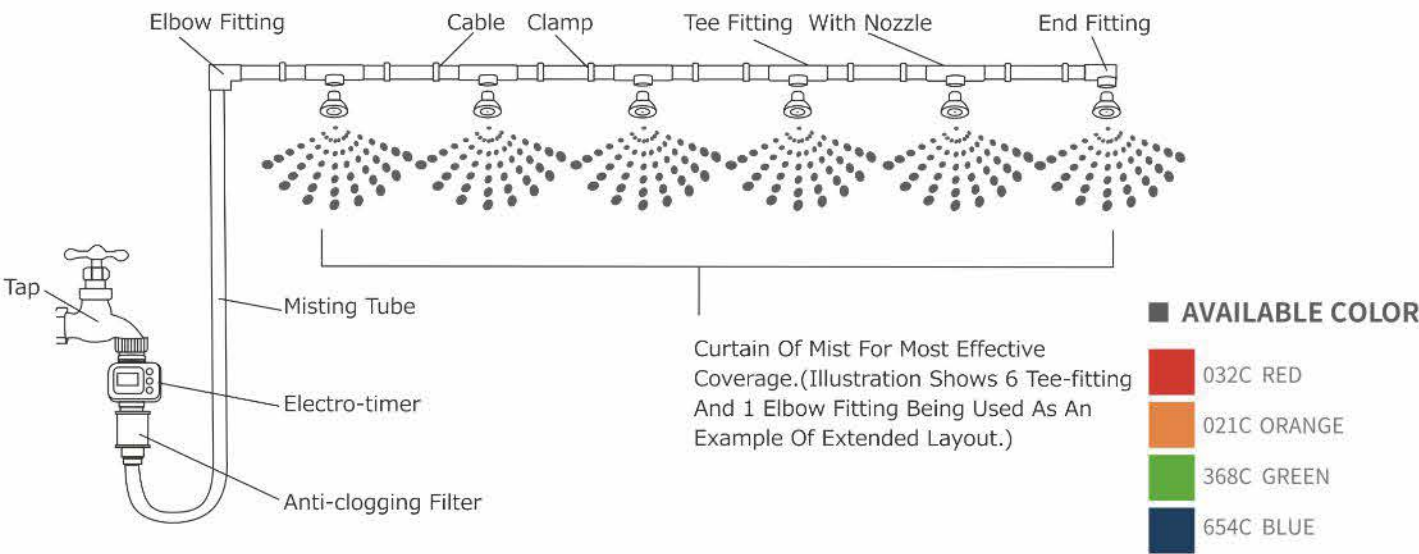
Water Connection:1/2", 3/4"Thread  
Recommended water pressure: 1bar/14.5psi-7bar/101.5psi  
Time Set: 2 sec to 99 hr  
Frequency Set: 2 sec to 99 hr  
Power Supply: 1x 9V Alkaline battery(not included)  
Recommended operating temperature: 4-60°C

FEATURES

- Effective control of misting frequency and duration with simple, straightforward and user-friendly programming
- Weather-resistant,impact-resistance,premium ABS construction
- Easy-to-read 1.4"X0.9"LCD Display alternates between current time and timer status with bar-graph battery strength indicator
- Low power consumption, up to 40,000 on/off cycle with 1 fresh battery



MISTING SYSTEM



TIMER

Electronic Misting Timer

6 949031 908272

Model Number	Quantity Per Ctn	Master Carton Size(cm)	G.W./N.W.(KG)	20'GP(ctns)	40'GP(ctns)	40'HQ(ctns)
000100	108	61x44x45.5	23.1/21.6	229	475	557

FILTER

Misting Calcium Inhibitor Filter

6 949031 908258

Model Number	Quantity Per Ctn	Master Carton Size(cm)	G.W./N.W.(KG)	20'GP(ctns)	40'GP(ctns)	40'HQ(ctns)
000200	80	61x51x37	20.3/18.8	243	503	590

NOZZLE

Plastic Nozzle

6 949031 908227

Model Number	Quantity Per Ctn	Master Carton Size(cm)	G.W./N.W.(KG)	20'GP(ctns)	40'GP(ctns)	40'HQ(ctns)
000300	288	39x36x31	4.7/3.7	636	1318	1545

Brass Nozzle

6 949031 908203

Model Number	Quantity Per Ctn	Master Carton Size(cm)	G.W./N.W.(KG)	20'GP(ctns)	40'GP(ctns)	40'HQ(ctns)
000301	288	39x36x31	7/6	636	1318	1545

Brass Drain Valve

6 949031 908210

Model Number	Quantity Per Ctn	Master Carton Size(cm)	G.W./N.W.(KG)	20'GP(ctns)	40'GP(ctns)	40'HQ(ctns)
000302	288	39x36x31	5.6/4.6	636	1318	1545



# 01 HOUSEHOLD HIGH PRESSURE MISTING PUMP

★NEW for 2023★

COMPLY WITH



## 70001 Misting Pump 0.5L

### FEATURES

- Streamline design and elegant exterior
- Features with a touch panel for multi-function operation, supported by remote control
- Patented 3-piston pump, long life span
- Motor overheating protection
- Water lack protection
- Noise reduction Technology to keep lower noise of around 50db
- Low frequency maintenance to pump every 1000 running hours
- High gloss metallic finishing pump housing
- Equipped with nylon tubing, PVC supply hose, anti-dripping nozzles, brass fittings, hose cutter
- Ideal for outdoor cooling, environment moisturizing, mosquito repelling, disinfection, landscaping
- CE approved
- Available color: gold, water blue



Pump Material: Aviation Aluminum  
Piston Material: Ceramic plated SS304  
Seal Material: Viton  
Hardware material:SS304

Model	Pump			Power Supply Voltage	Motor			Performance				
	Water Flow	Pump	Pressure		Motor Voltage	Power	Rpm	Noise Level	Maintenance Time	Control	Nozzel Qty (0.15mm)	Cooling Size
70001	0.5L/min	3 pistons	70Bar /1000psi	100~240 AC	12V DC with brush	150W	1100	50db	1000h	Remote Control	4~11 pcs	5m <sup>2</sup> -35m <sup>2</sup>

Item Number	70001
Carton Size(MM)	500*250*300
G.W./N.W.(KGS)	10/9.5
QTY 20GP/40GP/40HQ(PCs)	693/1440/1813
EAN	6949031915379

# 01 COMMERCIAL USE HIGH PRESSURE MISTING PUMP

STARMIST

Mist Cooling

COMPLY WITH



## 70002 Misting Pump 1.5L 70003 Misting Pump 2.0L

### FEATURES

- Features with a touch panel for multi-function operation, supported by smartphone App control
- Patented 3-piston pump, long life span
- Motor overheating protection
- Water lack protection
- Noise reduction Technology to keep lower noise of around 60db
- Low frequency maintenance to pump every 800-1000 running hours
- High gloss metallic finish pump housing
- Equipped with stainless steel tubing, PVC supply hose, anti-dripping nozzles, brass fittings, water filter, filter wrenches, hose cutter, mounting clamps, spare O-rings
- Ideal for outdoor cooling, environment moisturizing, mosquito repelling, disinfection, landscaping
- CE approved
- Available color: white, brown, red, blue



Pump Material: Aviation Aluminum  
Piston Material: Ceramic plated SS304  
Seal Material: Viton  
Hardware material:SS304



### AUTOMATIC SENSOR AND REMOTE SYSTEM



Model	Pump			Power Supply Voltage	Motor			Performance				
	Water Flow	Pump	Pressure		Motor Voltage	Power	Rpm	Noise Level	Maintenance Time	Control	Nozzel Qty (0.15mm)	Cooling Size
70002	50Hz:1.5L/min 60Hz:1.8L/min	3 pistons	70Bar /1000psi	110~240 AC	110/220V AC	180W	1400/50Hz 1680/60Hz	56db	800-1200h	Smart Phone App/ Remote Control	16~40 pcs	20m <sup>2</sup> -100m <sup>2</sup>
70003	50Hz:2.0L/min 60Hz:2.4L/min	3 pistons	70Bar /1000psi	220~240 AC	220V AC	250W	1400/50Hz 1680/60Hz	58db	800-1200h	Smart Phone App/ Remote Control	24~55 pcs	30m <sup>2</sup> -150m <sup>2</sup>

Item Number	70002	70003
Carton Size for Pump(MM)	471*310*340	471*310*340
Carton Size for Tube(MM)	780*30*60	780*60*60
G.W./N.W.(KGS)	15.95/17.5	18.2/20
QTY 20GP/40GP/40HQ(PCs)	520/1080/1360	510/1059/1333
EAN	6949031915386	6949031915393





## 983036N 3.6M/12FT 3/8"

Upgrade your outdoors with the power of high pressure mist. The professional grade patio mister DIY HP 12 flexible nylon edition system provides a cool environment from the heat for your favorite outdoor areas.

### FEATURES

- Has flexible nylon high pressure tubing
- Durable rust proof metal enclosure
- Ultra fine brass nozzle
- Slip-lock fittings for easy set up
- Intended for use with high pressure misting pumps up to 1000psi
- Easily expandable with additional accessory purchases
- No gluing or special tools required

### SPECIFICATION:

- Tubing material: nylon
- Length of tube included: 3.6m/12ft
- Tubing diameter(in): 3/8"
- Fitting material: brass
- Nozzle material: brass
- Maximum pressure: 1000psi

### APPLICATION

1. Great for cooling your outdoor living areas
2. Cool for animals
3. Evaporative cooling for flue gas, poultry farm
4. Irrigation of vegetables
5. Humidify for factory
6. Artificial fog



Model	EAN	Packaging	Master Carton Size(cm)	Quantity Per Ctn	G.W./N.W. (kgs)	20'GP (ctns)	40'GP (ctns)	40'HQ (ctns)
983036N	694903190482	Color box	65x40x28	12pcs	13.3/12	444	908	1017

## 983036S 3.6M/12FT 3/8"

Upgrade your outdoors with the power of high pressure mist. The professional grade patio mister DIY HP 12 stainless steel edition system provides a cool environment from the heat for your favorite outdoor areas.



### FEATURES

- Uses high pressure tubing
- Durable rust proof metal enclosure
- Ultra fine brass nozzle
- Slip-lock fittings for easy set up
- Intended for use with high pressure misting pumps up to 1000psi
- Easily expandable with additional accessory purchases
- No gluing or special tools required

### APPLICATION

1. Great for cooling your outdoor living areas
2. Cool for animals
3. Evaporative cooling for flue gas, poultry farm
4. Irrigation of vegetables
5. Humidify for factory
6. Artificial fog

### SPECIFICATION:

- Tubing material: stainless steel
- Length of tube included: 3.6m/12ft
- Tubing diameter(in.): 3/8"
- Fitting material: brass
- Nozzle material: brass
- Maximum pressure: 1000psi



Model	EAN	Packaging	Master Carton Size(cm)	Quantity Per Ctn	G.W./N.W. (kgs)	20'GP (ctns)	40'GP (ctns)	40'HQ (ctns)
983036S	694903190483	Color box	65x40x28	12pcs	18.3/16	444	908	1017

61cm/2ft Stainless Steel Tubing Mist Line	6X
Brass Nozzle	5X
Metal Nozzle Fitting	5X
Metal Elbow Fitting	2X
Metal Coupling Fitting	1X
Metal End Cap Fitting	1X
Tapping Screw	12X
Mounting Brackets	12X



01

INSERT-IN OUTDOOR MIST COOLING SYSTEM LOW PRESSURE KIT

741015 15M/50FT 1/4"



Long sleeve insert-in brass nozzles to perfectly match the 1/4" universal quick connectors. Easy to get similar fittings in the open market for fitting replacement or additional fittings to extend misting kit.

FEATURES

- Do-it-yourself mist cooling kit
- Environmental PE tubing
- Attach to any standard garden hose
- Portable and easy to install
- Reduce temperatures by up to 2°C/ 35°F
- For outdoor use with cold water only
- Applicable to porch, deck or umbrella

SPECIFICATION:

- Tubing material: Polyethylene
- Tubing length: 50ft (15m)
- Nozzle material: Brass
- Tubing diameter (in.): 1/4"
- Working pressure: 2.8bar/40psi-8.3bar/120psi

APPLICATION

1. Great for cooling your outdoor living areas
2. Cool for animals
3. Artificial fog



Model	EAN	Packaging	Master Carton Size(cm)	Quantity Per Ctn	G.W./N.W. (kgs)	20'GP (ctns)	40'GP (ctns)	40'HQ (ctns)
741015	6949031903116	Color box	38.5x37.5x15	12pcs	4.8/4.4	1476	3056	3459



	Lead Line Misting Line	10ft/3m 40ft/12m
	Three way Tee-fitting	
	Brass Nozzle	12X
	Slip-lock Swivel Nut	
	End Plug	1X
	Nylon Cable Tie	
	Hanger Clip	24X
	Hose Cutter	1X

01

FLEXIBLE MISTING STAND



Mist Cooling

★NEW for 2023★



821019 Flexible Misting Stand

Material: Aluminium composite pipe  
Diameter:12.5\*20mm  
Length:1.90M  
Includes brass nozzles and male adaptor

- Bend and position into different shapes and sizes to fit your misting needs
- Make sure that the hose washer is in place and attach to garden hose
- Unscrew mist nozzles and run water to flush
- Turn off the water and hand tighten the mist nozzles in place
- Always drain water from misting stand after use
- Unit will be under pressure for several minutes after turning water off, do no tattempt to remove nozzles while unit is under pressure



Model	EAN	Packaging	Master Carton Size(cm)	Quantity Per Ctn	G.W./N.W. (kgs)	20'GP (ctns)	40'GP (ctns)	40'HQ (ctns)
821019	6949031915362	Tie on Card	40x35x62	10pcs	4.9/4	356	754	850



01

## SWIVEL-LOCK OUTDOOR MIST COOLING SYSTEM LOW PRESSURE KIT

**516512 12M/40FT 5/16" 516509 9M/30FT 5/16" 516506 6M/20FT 5/16"**



### FEATURES

- Do-it-yourself mist cooling kit
- Environmental PVC tubing
- Attach to any standard garden hose
- Portable and easy to install
- Reduce temperatures by up to 2°C/ 35°F
- 2.8bar/40psi-8.3bar/120psi working pressure
- For outdoor use with cold water
- Applicable to patio, gazebo, porch, swimming pool, playground, garden, even greenhouse

### SPECIFICATION:

- Tubing material: PVC
- Tubing length: 40ft(12m), 30ft(9m), 20ft(6m)
- Nozzle material: Brass
- Tubing diameter (in.): 5/16"
- Working pressure: 2.8bar/40psi-8.3bar/120psi

### APPLICATION

1. Great for cooling your outdoor living areas
2. Cool for animals
3. Artificial fog



Model	EAN	Packaging	Master Carton (cm)	Quantity Per master Ctn	G.W./N.W. (kgs)	20'GP (ctns)	40'GP (ctns)	40'HQ (ctns)
516512	6949031904854	Color box	54.5x41x30	12pcs	14/12.5	459	984	1109
516509	6949031903178	Color box	44.5x41x25	12pcs	8.6/7.1	681	1414	1635
516506	6949031904861	Color box	38.5x32x22	12pcs	5/4	1190	2424	2734

01

## ALL-AROUND FRESH MIST COOLING SYSTEM LOW PRESSURE KIT

**STARMIST**

Mist Cooling

★NEW for 2023★



**616512L 12M/40FT 5/16"**



New generation and patented all-around nozzle holder allows attached nozzles to rotate 360 degrees aiming at any misting direction or area.

### FEATURES

- Updated Swivel-lock system
- Do-it-yourself mist cooling kit
- Environmental PVC tubing
- Attach to any standard garden hose
- Portable and easy to install
- Reduce temperatures by up to 2°C/ 35°F
- For outdoor use with cold water
- Applicable to patio, gazebo, porch, swimming pool, playground, garden, even greenhouse

### SPECIFICATION:

- Tubing material: PVC
- Tubing length: 40ft(12m)
- Nozzle material: Brass
- Tubing diameter (in.): 5/16"
- Working pressure: 2.8bar/40psi-8.3bar/120psi

### APPLICATION

1. Great for cooling your outdoor living areas
2. Cool for animals
3. Artificial fog



Model	EAN	Packaging	Master Carton (cm)	Quantity Per master Ctn	G.W./N.W. (kgs)	20'GP (ctns)	40'GP (ctns)	40'HQ (ctns)
616512L	6949031903178	Color box	44.5x41x25	12pcs	8.6/7.1	681	1414	1635

	Misting Line	40ft/12m
	Tee-fitting with Nozzle Holder	15
	End Fitting with Nozzle Holder	1
	Anti-dripping Brass Nozzle with Ceramic Orifice	12
	Male Adaptor	1
	Swivel-lock Swivel Nut	1
	Hanger Clip	32
	Screw 3/8" Cable Clamp	32



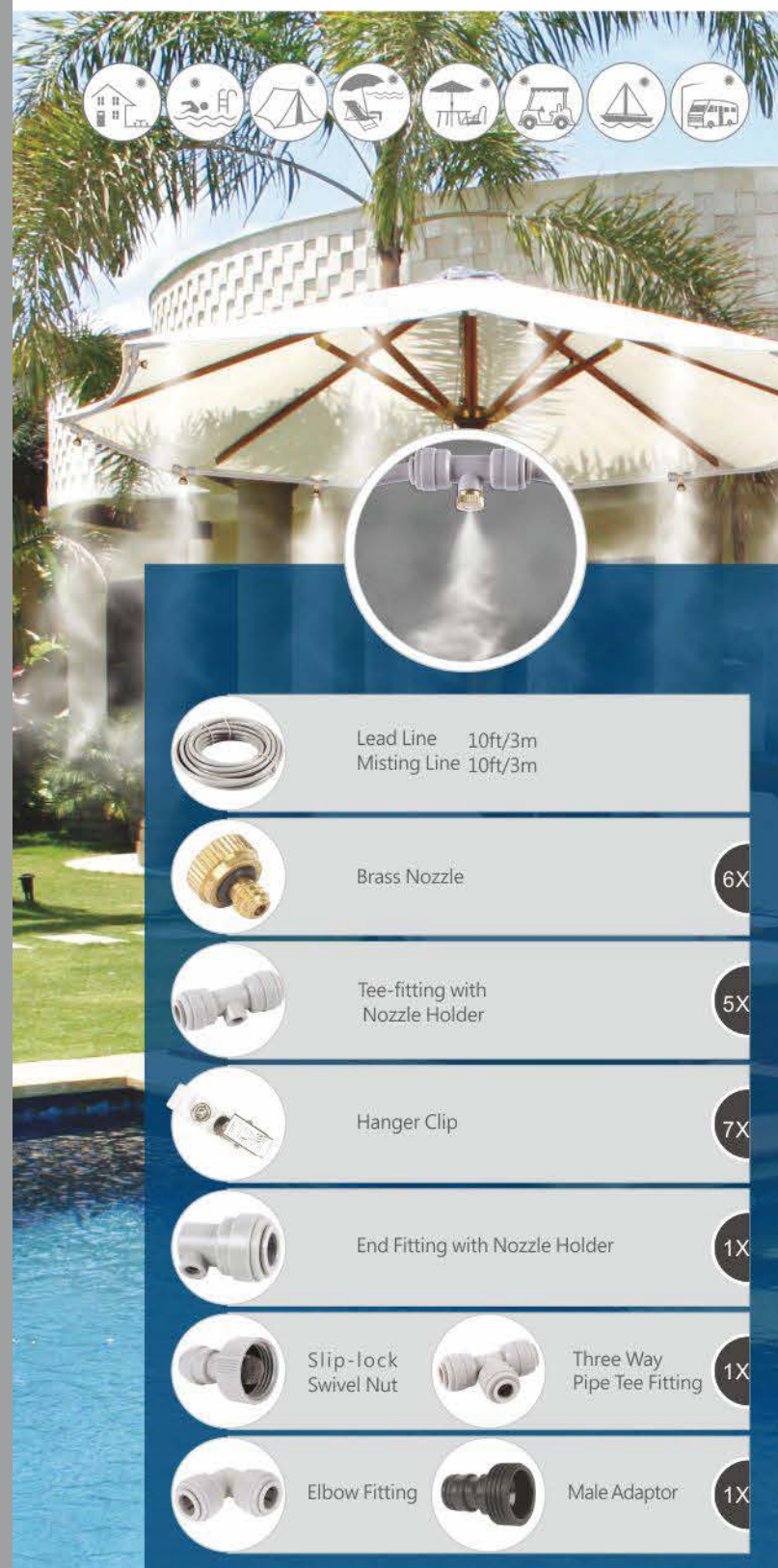


01

SLIP-LOCK OUTDOOR MIST COOLING  
SYSTEM DIY LOW PRESSURE KIT

STARMIST

Mist Cooling



Model	EAN	Packaging	Master Carton Size(cm)	Quantity Per Ctn	G.W./N.W. (kgs)	20'GP (ctns)	40'GP (ctns)	40'HQ (ctns)
441006	6949031903161	Color box	38.5x32x22	12pcs	7/6	1190	2424	2734

## 441006 6M/20FT 1/4"

## FEATURES

- Do-it-yourself mist cooling kit
- Environmental PE tubing
- Attach to any standard garden hose
- Portable and easy to install
- Reduce temperatures by up to 2°C/ 35°F
- For outdoor use with cold water only
- Applicable to porch, decker or umbrella

## SPECIFICATION:

- Tubing material: Polyethylene
- Tubing length: 20ft (6m)
- Nozzle material: Brass
- Tubing diameter (in.): 1/4"
- Working pressure: 2.8bar/40psi-8.3bar/120psi

## APPLICATION

1. Great for cooling your outdoor living areas
2. Cool for animals
3. Artificial fog

483012D 12M/40FT 3/8" 483012 12M/40FT 3/8"  
483009 9M/30FT 3/8" 483006 6M/20FT 3/8"

## FEATURES

- Do-it-yourself mist cooling kit
- Environmental PE tubing
- Attach to any standard garden hose
- Portable and easy to install
- Reduce temperature by up to 2°C/ 35°F
- For outdoor use with cold water only
- Applicable to patio, gazebo, porch, swimming pool, playground, garden, even greenhouse

## SPECIFICATION:

- Tubing material: Polyethylene
- Tubing length: 40ft(12m),30ft(9m),20ft(6m)
- Nozzle material: Brass
- Tubing diameter (in.): 3/8"
- Working pressure: 2.8bar/40psi-8.3bar/120psi

## APPLICATION

1. Great for cooling your outdoor living areas
2. Cool for animals
3. Artificial fog



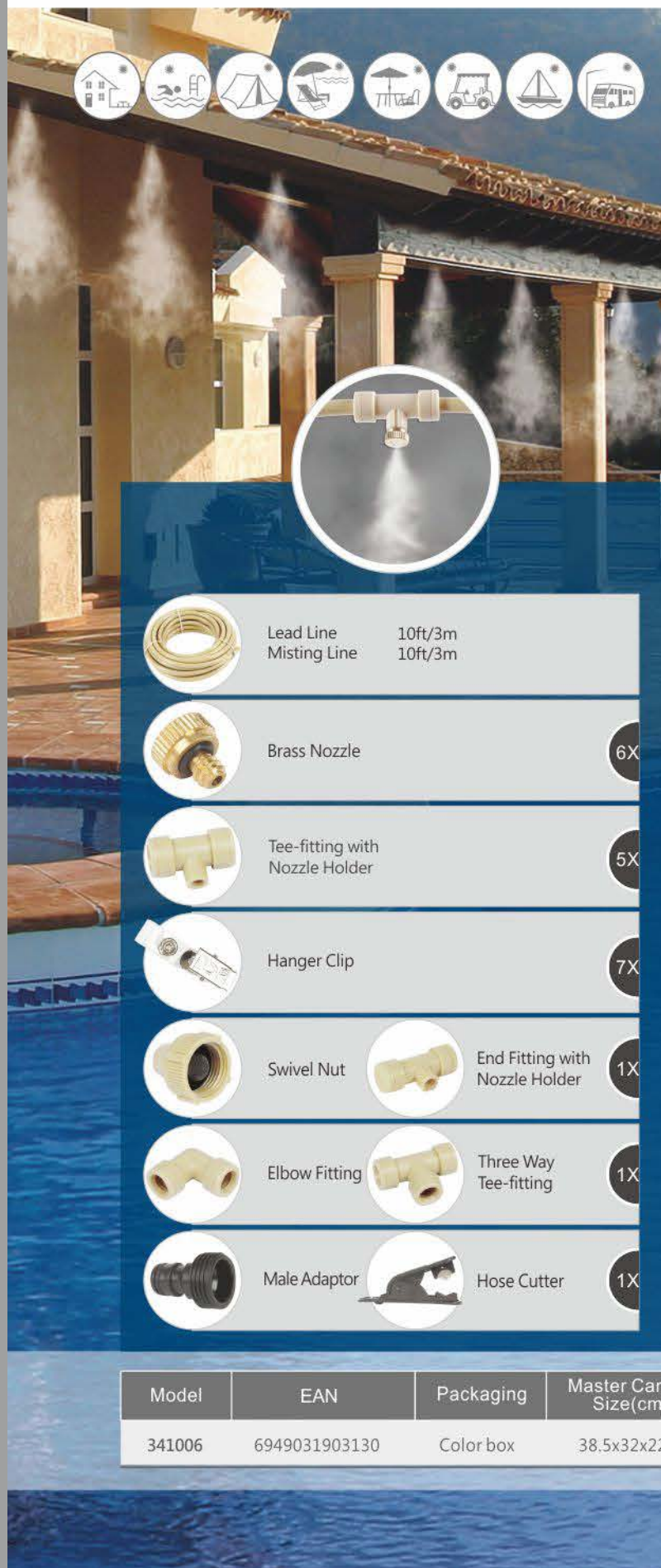
Model	EAN	Packaging	Master Carton Size(cm)	Quantity Per Ctn	G.W./N.W. (kgs)	20'GP (ctns)	40'GP (ctns)	40'HQ (ctns)
483012D	6949031903536	Color box	64.5x41x35	12pcs	17.2/15.1	338	705	811
483012	6949031903512	Color box	64.5x41x35	12pcs	14.8/12.7	338	705	811
483009	6949031903147	Color box	54.5x41x30	12pcs	11.4/9.6	459	984	1109
483006	6949031903529	Color box	44.5x41x25	12pcs	8/6.5	681	1414	1635

	483012D	483012	483009	483006
Lead Line Misting Line	10ft/3m 30ft/9m	10ft/3m 30ft/9m	10ft/3m 20ft/6m	10ft/3m 10ft/3m
Brass Nozzle	16	16	11	6
Brass Drain Valve	1	1	1	1
Slip-lock Swivel Nut	1	1	1	1
Tee-fitting with Nozzle Holder	15	15	10	5
End Fitting with Nozzle Holder	1	1	1	1
Three Way Pipe Tee-fitting	1	1	1	1
Elbow Fitting	1	1	1	1
Anti-clogging Filter	1			
Electro-timer	1			
Male Adaptor	1	1	1	1
Hose Cutter	1	1	1	1
Screw 3/8" Cable Clamp	32	32	22	12



01

# PUSH-IN OUTDOOR MIST COOLING SYSTEM DIY LOW PRESSURE KIT



Model	EAN	Packaging	Master Carton Size(cm)	Quantity Per Ctn	G.W./N.W. (kgs)	20'GP (ctns)	40'GP (ctns)	40'HQ (ctns)
341006	6949031903130	Color box	38.5x32x22	12pcs	4.6/3.6	1190	2424	2734

## 341006 6M/20FT 1/4"

### FEATURES

- Do-it-yourself mist cooling kit
- Environmental PE tubing
- Attach to any standard garden hose
- Portable and easy to install
- Reduce temperatures by up to 2°C/ 35°F
- Maximum 3.5bar/50psi working pressure
- For outdoor use with cold water only
- Applicable to patio, decker or umbrella

### SPECIFICATION:

- Tubing material: Polyethylene
- Tubing length: 20ft (6m)
- Nozzle material: Brass
- Tubing diameter (in.): 1/4"
- Maximum pressure: 3.5bar/50psi

### APPLICATION

1. Great for cooling your outdoor living areas
2. Cool for animals
3. Artificial fog



Mist Cooling



## 383012 12M/40FT 3/8" 383009 9M/30FT 3/8" 383006 6M/20FT 3/8"



### FEATURES

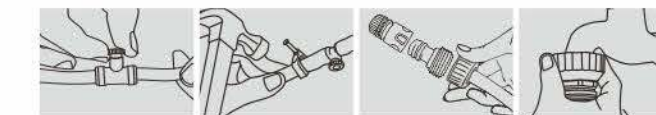
- Do-it-yourself mist cooling kit
- Environmental PE tubing
- Attach to any standard garden hose
- Portable and easy to install
- Reduce temperature by up to 2°C/ 35°F
- For outdoor use with cold water only
- Applicable to patio, gazebo, porch, swimming pool, playground, garden, even greenhouse

### SPECIFICATION:

- Tubing material: Polyethylene
- Tubing length: 40ft(12m),30ft(9m),20ft(6m)
- Nozzle material: Brass
- Tubing diameter (in.): 3/8"
- Working pressure: 2.8bar/40psi-8.3bar/120psi

### APPLICATION

1. Great for cooling your outdoor living areas
2. Cool for animals
3. Artificial fog



383012 383009 383006

	Lead Line Misting Line	10ft/3m 30ft/9m	10ft/3m 20ft/6m	10ft/3m 10ft/3m
	Brass Nozzle	16	11	6
	Brass Drain Valve	1	1	1
	Swivel Nut	1	1	1
	Tee-fitting with Nozzle Holder	15	10	5
	End Fitting with Nozzle Holder	1	1	1
	Three Way Tee-fitting	1	1	1
	Elbow Fitting	1	1	1
	Hose Cutter	1	1	1
	Male Adaptor	1	1	1
	3/8" Mounting Clamp	32	22	12

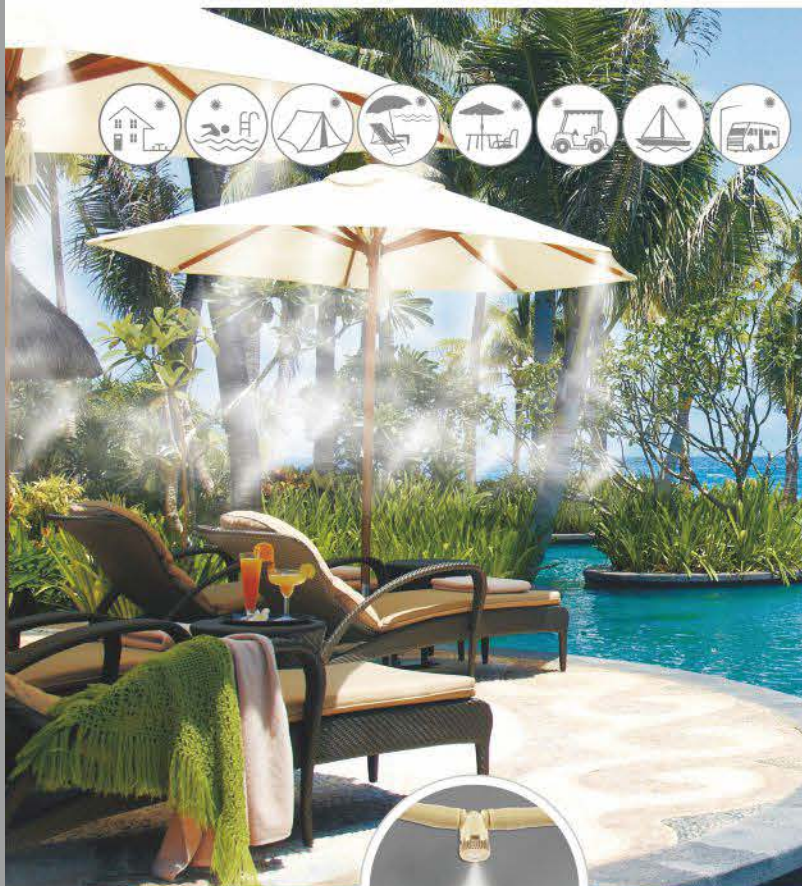
Model	EAN	Packaging	Master Carton Size(cm)	Quantity Per Ctn	G.W./N.W. (kgs)	20'GP (ctns)	40'GP (ctns)	40'HQ (ctns)
383012	6949031904410	Color box	64.5x41x35	12pcs	15.2/13.2	338	705	811
383009	6949031903123	Color box	54.5x41x30	12pcs	10/8.2	459	984	1109
383006	6949031904427	Color box	44.5x41x25	12pcs	5.7/4.2	681	1414	1635

09/10



01

PATIO MISTER OUTDOOR MIST COOLING SYSTEM  
PREASSEMBLED LOW PRESSURE KIT



	Lead Line Misting Line	10ft/3m	10ft/3m
	Male Adaptor		1X
	Brass Nozzle		6X
	Hanger Clip		7X

Model	EAN	Packaging	Master Carton Size(cm)	Quantity Per Ctn	G.W./N.W. (kgs)	20'GP (ctns)	40'GP (ctns)	40'HQ (ctns)
241006	6949031903116	Color box	38.5x32x22	12pcs	4.4/3.4	1190	2424	2734

241006 6M/20FT 1/4"

FEATURES

- Preassembled PE tubing
- Connects to any outdoor faucet or garden hose
- Portable and easy to install
- Reduce temperatures up to 2°C/ 35°F
- For outdoor use with cold water only
- Applicable to porch, decker or umbrella

SPECIFICATION:

- Tubing material: Polyethylene
- Tubing length: 20ft(6m)
- Nozzle material: Brass
- Tubing diameter (in.): 1/4"
- Maximum pressure: 3.5bar/50psi

APPLICATION

1. Great for cooling your outdoor living areas
2. Cool for animals
3. Artificial fog



STARMIST

Mist Cooling

283012 12M/40FT 3/8" 283006 6M/20FT 3/8"  
283009 9M/30FT 3/8"



FEATURES

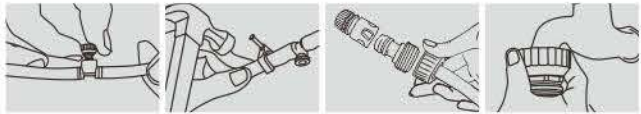
- Preassembled environmental PE tubing
- Attach to any standard garden hose
- Portable and easy to install
- Reduce temperatures by up to 2°C/ 35°F
- For outdoor use with cold water only
- Applicable to patio, gazebo, porch, swimming pool, playground, garden, even greenhouse

SPECIFICATION:

- Tubing material: Polyethylene
- Tubing length: 40ft(12m),30ft(9m),20ft(6m)
- Nozzle material: Brass
- Tubing diameter (in.): 3/8"
- Working pressure: 2.8bar/40psi-8.3bar/120psi

APPLICATION

1. Great for cooling your outdoor living areas
2. Cool for animals
3. Artificial fog



	283012	283009	283006
	Lead Line Misting Line	10ft/3m 30ft/9m	10ft/3m 20ft/6m 10ft/3m
	Brass Drain Valve	1	1
	Male Adaptor	1	1
	Brass Nozzle	16	11
	T-filter	1	1
	3/8" Mounting Clamp	32	22

Model	EAN	Packaging	Master Carton Size(cm)	Quantity Per Ctn	G.W./N.W. (kgs)	20'GP (ctns)	40'GP (ctns)	40'HQ (ctns)
283012	6949031903512	Color box	64.5x41x35	12pcs	15.2/13.2	338	705	811
283009	6949031903086	Color box	54.5x41x30	12pcs	9.6/7.8	459	984	1109
283006	6949031903093	Color box	44.5x41x25	12pcs	5.1/3.6	681	1414	1635





## 141010F Misting Fan Ring 3M/10FT 1/4"

The 10"(25cm) metal fan ring effectively enhances the cooling power of any regular outdoor fan. The 4 nozzles ring simply attaches to the safety cage turns your regular fan into a powerful mister.

### FEATURES

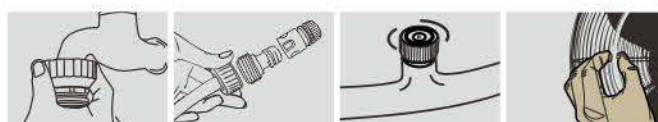
- Completely preassembled. Simply unpack and attach
- Works at standard city water pressure of 2.8bar/40psi-8.3bar/120psi
- Ultra-fine brass nozzles
- Leak proof compression fittings
- UV treated flexible tubing
- Garden hose connector with mesh filter washer
- Metal Fan Ring for all types of outdoor weather

### SPECIFICATION:

- Ring material: stainless steel
- Ring diameter: 10"(25cm)
- Nozzle material: Brass
- Tubing material: PVC
- Tubing length: 10ft (3m)
- Tubing diameter (in.): 1/4"
- Working pressure: 2.8bar/40psi - 8.3bar/120psi

### APPLICATION

1. Great for cooling your outdoor living areas
2. Cool for animals
3. Artificial fog



Model	EAN	Packaging	Master Carton Size(cm)	Quantity Per Ctn	G.W./N.W. (kgs)	20'GP (ctns)	40'GP (ctns)	40'HQ (ctns)
141010F	6949031900733	Color box	30.5x30.5x25	6pcs	4/3	3374	6972	7890

## 183012D 12.8M/42FT 3/8" 183012 12M/40FT 3/8" 183009 9M/30FT 3/8" 183006 6M/20FT 3/8"



The ultimate upgrade to your outdoor lifestyle. The professional grade patio mister system provides a cool environment from the heat for your favorite outdoor areas. It delivers a continuous stream of ultra-fine mist, and can cool the ambient temperature up to 2°C/ 35°F. Once the mist touches the skin, it flash-evaporates on contact ensuring a mild climate in even the hottest environments.

### FEATURES

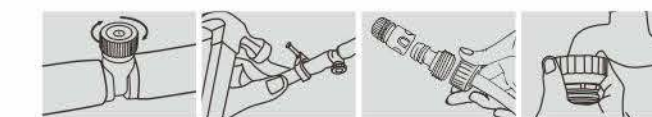
- Connects to any outdoor faucet or garden hose
- Portable and easy to install
- Reduce temperatures up to 2°C/ 35°F
- For outdoor use with cold water only
- Applicable to porch, decker or umbrella

### SPECIFICATION:

- Tubing material: PVC
- Tubing length: 42ft(12.8m), 40ft(12m), 30ft(9m), 20ft(6m)
- Nozzle material: Polyamide
- Tubing diameter (in.): 3/8"
- Working pressure: 2.8bar/40psi-8.3bar/120psi

### APPLICATION

1. Great for cooling your outdoor living areas
2. Cool for animals
3. Artificial fog



	183012D	183012	183009	183006
Lead Line	10ft/3m	10ft/3m	10ft/3m	10ft/3m
Misting Line	32ft/9.8m	30ft/9m	20ft/6m	10ft/3m

Micromist Nozzle	17	16	11	6
------------------	----	----	----	---

Male Adaptor	1	1	1	1
--------------	---	---	---	---

2 Hours Mechanical Timer	1			
--------------------------	---	--	--	--

3/8" Mounting Clamp	34	32	22	12
---------------------	----	----	----	----

Model	EAN	Packaging	Master Carton Size(cm)	Quantity Per Ctn	G.W./N.W. (kgs)	20'GP (ctns)	40'GP (ctns)	40'HQ (ctns)
183012D	6949031900559	Color box	57.5x49.5x30	10pcs	18/16.5	370	768	864
183012	6949031900535	Color box	57.5x49.5x30	10pcs	16/15	370	768	864
183009	6949031900511	Color box	51x42x27	10pcs	12/11	551	1139	1283
183006	6949031900498	Color box	41.5x39.5x22.7	10pcs	8.5/7.5	870	1791	1960





## 141001 Spiral Misting Hose 1/4"

The spiral misting hose is a highly flexible and versatile outdoor cooling solution that creates an ultra-fine mist.

Ideal for sunbathing, outdoor sitting areas, pet areas, and watering plants. Just attach to an outdoor garden hose and place in the desired position.

### SPECIFICATION:

- Color: Lime Green
- Nozzle Material: Polyamide
- Tubing Material: PVC
- Tubing Length: 36" (91cm)
- Tubing Diameter (in.): 1/4"
- Maximum Pressure: 3.5bar/50psi

### APPLICATION

1. Great for cooling your outdoor living areas
2. Cool for animals
3. Artificial fog



European Male  
Adaptor Available



Model	EAN	Packaging	Master Carton Size(cm)	Quantity Per Ctn	G.W./N.W. (kgs)	20'GP (ctns)	40'GP (ctns)	40'HQ (ctns)
141001	6949031900474	Blister Card	66x48x30	120pcs	13.6/12	320	672	780



## 141006 6M/20FT 1/4"

The totally portable patio 6 outdoor mist system provides a cool environment from the heat wherever you need it.

The preassembled system attaches securely to your patio fascia and provides 10 feet (3m) of mist to cool the ambient temperature by up to 2°C/ 35°F

### FEATURES

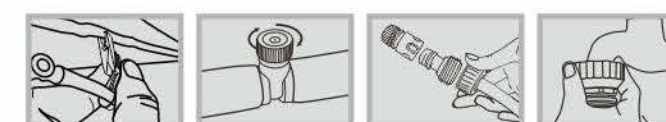
- Preassembled easy to Install
- Micromist technology
- Perfect for outdoor use
- Reduce temperature up to 2°C/ 35°F

### SPECIFICATION

- Tubing material: Polyethylene
- Tubing length: 20ft(6m)
- Nozzle Material: Polyamide
- Tubing diameter(in. ): 1/4"
- Maximum pressure: 3.5bar/50psi

### APPLICATION

1. Great for cooling your outdoor living areas
2. Cool for animals
3. Artificial fog



Model	EAN	Packaging	Master Carton Size(cm)	Quantity Per Ctn	G.W./N.W. (kgs)	20'GP (ctns)	40'GP (ctns)	40'HQ (ctns)
141006	6949031900481	Color box	44.5x26.5x25	40pcs	9/8	1102	2268	2544



	Lead Line Misting Line	10ft/3m	
	Micromist Nozzle		6X
	Male Adaptor		1X
	Hanger Clip		7X



# 01

## Mist Cooling



### LOW PRESSURE MIST COOLING SYSTEM

If you're looking for a way to beat the summer heat, a misting system might be the answer for you. Starmist mist cooling system offers perfect low cost solution for your outdoor cooling need. These systems use high quality parts like brass or plastic mist nozzles, UV treated tubing and leak proof compression misting tees that will last for years to come. The low pressure misting systems operate off of standard household water pressure without the need for an expensive misting pump. The system can either be hooked up directly to a garden hose or to a garden hose faucet.

#### HOW IT WORKS

All misters work with evaporative cooling - the natural cooling effect that happens when water evaporates in warm air. Misting systems are most commonly defined as a series of special mist nozzles placed in a line around the perimeter of an area. When connected to a tap, water is forced through the specialty nozzles and will produce billions of tiny droplets every second. If these droplets are introduced into an outdoor area, they quickly evaporate. This process of evaporation requires energy to be completed. The energy is taken from the air in the form of heat. The result is a temperature reduction of up to 35°F / 2°C, depending on the ambient temperature and the relative humidity of the air. This method of temperature reduction is the most common use for all misting systems.

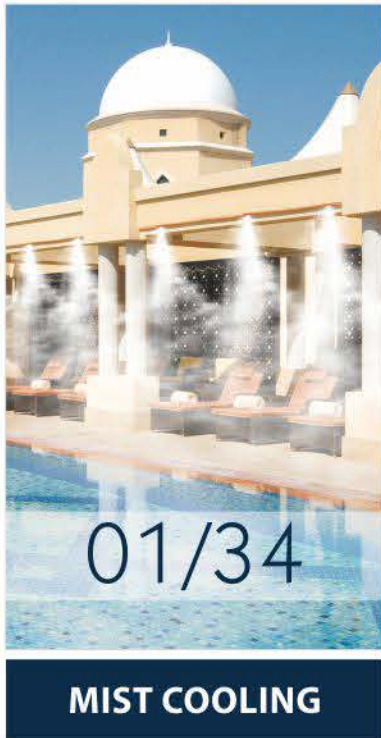
#### WHERE TO USE MISTING SYSTEM

Misting system can be very effective for cooling open outdoor areas because the weight of the water in the spray keeps the cooling relatively confined. That means the cooling effect will stay in the area you actually want to be cooled. Widely used in patios, pools, greenhouses, gardens, gazebos, restaurants, sports arenas, camp sites, outdoor events, even in pets areas.





# PRODUCT INDEX



03/18	Mist Cooling System
19/20	Misting Pump
21/27	Mist Cooling Part
28/30	Personal Mister
31/32	Personal Cooler
33/34	Misting Fan & Splash Pad

37/38	Fire Pit
-------	----------

MIST COOLING  
STARMATRIX GROUP INC.





# MIST COOLING







**STARMIST**  
MIST COOLING SYSTEM

**GARTENKRAFT**  
HEATING SYSTEM

To Create A Better Life